

Anti-DRD2 antibody (STJ500709)

STJ500709

GENERAL INFORMATION

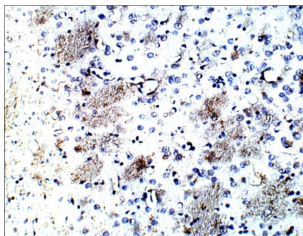
Product Type	Primary antibodies
Short Description	Rabbit polyclonal antibody anti-DRD2 is suitable for use in Confocal Microscopy, ELISA, Immunocytochemistry, Immunofluorescence, Immunohistochemistry, Immunoprecipitation and Western Blot research applications.
Applications	CM/ELISA/ICC/IF/IHC/IP/WB
Host/Source	Rabbit
Reactivity	Human/Mouse/Rat

PRODUCT PROPERTIES

Clonality	Polyclonal
Clone ID	
Concentration	0.55µg/µl
Conjugation	Unconjugated
Purification	Affinity Purified
Dilution Range	WB: 1:1, 000-1:1, 5000 ELISA: 1:50, 000 IP: 1:200 IHC: 1:200 ICC: 1:200 IF: 1:200
Formulation	Contains Tris, HCl/Glycine buffer pH 7.4-7.8, 30% Glycerol and 0.5% BSA, along with cryo-protective agents, Hepes, and long-term preservatives (0.02% Sodium Azide).
Isotype	IgG
Storage Instruction	Store at -20°C for long term storage. Avoid freeze-thaw cycles.

TARGET INFORMATION

Gene ID	1813
Gene Symbol	DRD2
Uniprot ID	DRD2_HUMAN
Immunogen	Synthetic peptide corresponding to unique sequence on human Dopamine D2 Receptor protein.
Immunogen Region	
Specificity	
Immunogen Sequence	



Immunohistochemistry of rat brain with Anti-DRD2 primary antibody (STJ500709) at 1:100 dilution in Buffer. Section was treated with DAB and Haematoxylin stain. Magnification is at 20X.

This product is suitable for in-vitro studies under the RESEARCH USE ONLY [RUO] licence. This product must not be used as for diagnostic or other medical purposes.
St John's Laboratory Ltd, Knowledge Dock Business Centre, University Way, London, E16 2RD | Tel: 0208 223 3081