

Anti-CYTH4 antibody (300-362) (STJ500690)

STJ500690

GENERAL INFORMATION

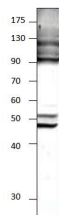
Product Type	Primary antibodies
Short Description	Rabbit polyclonal antibody anti-CYTH4 (300-362) is suitable for use in ELISA and Western Blot research applications.
Applications	ELISA/WB
Host/Source	Rabbit
Reactivity	Human/Mouse/Rat

PRODUCT PROPERTIES

Clonality	Polyclonal
Clone ID	
Concentration	0.61 µg/µl
Conjugation	Unconjugated
Purification	Affinity Purified
Dilution Range	WB: 1:500 DB: 1:10, 000 ELISA: 1:10, 000
Formulation	Contains Tris, HCl/Glycine buffer pH 7.4-7.8, 30% Glycerol and 0.5% BSA, along with cryo-protective agents, Hepes, and long-term preservatives (0.02% Sodium Azide).
Isotype	IgG
Storage Instruction	Store at -20°C for long term storage. Avoid freeze-thaw cycles.

TARGET INFORMATION

Gene ID	27128
Gene Symbol	CYTH4
Uniprot ID	CYH4_HUMAN
Immunogen	Synthetic peptide taken within amino acid region 300-362 on human Cytohesin 4 protein.
Immunogen Region	300-362
Specificity	
Immunogen Sequence	



Western blot with Anti-CYTH4 Antibody (STJ500690) with peptide on at 1:500 dilution in buffer.