

Anti-CX3CL1 antibody (350-395) (STJ500636)

STJ500636

GENERAL INFORMATION

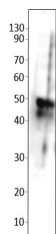
Product Type	Primary antibodies
Short Description	Rabbit polyclonal antibody anti-CX3CL1 (350-395) is suitable for use in ELISA, Immunohistochemistry, Immunoprecipitation and Western Blot research applications.
Applications	ELISA/IHC/IP/WB
Host/Source	Rabbit
Reactivity	Human/Monkey/Mouse/Rat

PRODUCT PROPERTIES

Clonality	Polyclonal
Clone ID	
Concentration	0.5 µg/µl
Conjugation	Unconjugated
Purification	Affinity Purified
Dilution Range	WB: 1:500 ELISA: 1:10, 000 IP: 1:150 IHC: 1:50-1:100
Formulation	Contains Tris, HCl/Glycine buffer pH 7.4-7.8, 30% Glycerol and 0.5% BSA, along with cryo-protective agents, Hepes, and long-term preservatives (0.02% Sodium Azide).
Isotype	IgG
Storage	Store at -20°C for long term storage. Avoid freeze-thaw cycles.
Instruction	

TARGET INFORMATION

Gene ID	20312
Gene Symbol	Cx3cl1
Uniprot ID	X3CL1_MOUSE
Immunogen	Synthetic peptide taken within amino acid region 350-395 on mouse Fractalkine protein.
Immunogen Region	350-395
Specificity	
Immunogen Sequence	



Western blot with Anti-CX3CL1 Antibody (STJ500636) of rat cerebellum at 1:500 dilution in buffer.