

Anti-CAPRIN1 antibody (200-250) (STJ500606)

STJ500606

GENERAL INFORMATION

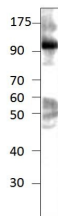
Product Type	Primary antibodies
Short Description	Rabbit polyclonal antibody anti-CAPRIN1 (200-250) is suitable for use in ELISA, Immunoprecipitation and Western Blot research applications.
Applications	ELISA/IP/WB
Host/Source	Rabbit
Reactivity	Human/Monkey/Mouse/Pig/Rat

PRODUCT PROPERTIES

Clonality	Polyclonal
Clone ID	
Concentration	0.54 µg/µl
Conjugation	Unconjugated
Purification	Affinity Purified
Dilution	WB: 1:500
Range	DB: 1:10, 000 ELISA: 1:10, 000
Formulation	Contains Tris, HCl/Glycine buffer pH 7.4-7.8, 30% Glycerol and 0.5% BSA, along with cryo-protective agents, Hepes, and long-term preservatives (0.02% Sodium Azide).
Isotype	IgG
Storage Instruction	Store at -20°C for long term storage. Avoid freeze-thaw cycles.

TARGET INFORMATION

Gene ID	4076
Gene Symbol	CAPRIN1
Uniprot ID	CAPR1_HUMAN
Immunogen	Synthetic peptide taken within amino acid region 200-250 on human Caprin 1 protein. Epitope CPRN1-101AP was raised against a region that lies on the surface of the protein in native or in partially denatured confirmation.
Immunogen Region	200-250
Specificity	
Immunogen Sequence	



Western blot with Anti-CAPRIN1 Antibody (STJ500606) with peptide on at 1:500 dilution in buffer.

This product is suitable for in-vitro studies under the RESEARCH USE ONLY [RUO] licence. This product must not be used as for diagnostic or other medical purposes.
St John's Laboratory Ltd, Knowledge Dock Business Centre, University Way, London, E16 2RD | Tel: 0208 223 3081