

Anti-CDX2 antibody (1-50) (STJ500495)

STJ500495

GENERAL INFORMATION

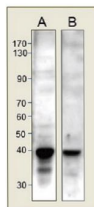
Product Type	Primary antibodies
Short Description	Rabbit polyclonal antibody anti-CDX2 (1-50) is suitable for use in ELISA, Immunoprecipitation and Western Blot research applications.
Applications	ELISA/IP/WB
Host/Source	Rabbit
Reactivity	Human/Mouse/Rat

PRODUCT PROPERTIES

Clonality	Polyclonal
Clone ID	
Concentration	0.65 µg/µl
Conjugation	Unconjugated
Purification	Affinity Purified
Dilution Range	WB: 1:500 DB: 1:4, 000 ELISA: 1:4, 000 IP: 1:150
Formulation	Contains Tris, HCl/Glycine buffer pH 7.4-7.8, 30% Glycerol and 0.5% BSA, along with cryo-protective agents, Hepes, and long-term preservatives (0.02% Sodium Azide).
Isotype	IgG
Storage	Store at -20°C for long term storage. Avoid freeze-thaw cycles.
Instruction	

TARGET INFORMATION

Gene ID	1045
Gene Symbol	CDX2
Uniprot ID	CDX2_HUMAN
Immunogen	N-epitope synthetic peptide taken within amino acid region 1-50 on human CDX2 protein.
Immunogen Region	1-50
Specificity	
Immunogen Sequence	



Western blot with Anti-CDX2 Antibody (STJ500495) with peptide on at 1:500 dilution in buffer.