

Anti-CD68 antibody (240-290) (STJ500480)

STJ500480

GENERAL INFORMATION

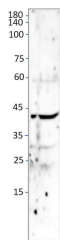
Product Type	Primary antibodies
Short Description	Rabbit polyclonal antibody anti-CD68 (240-290) is suitable for use in ELISA, Immunoprecipitation and Western Blot research applications.
Applications	ELISA/IP/WB
Host/Source	Rabbit
Reactivity	Human/Mouse/Rat

PRODUCT PROPERTIES

Clonality	Polyclonal
Clone ID	
Concentration	0.5-1.5 µg/µl
Conjugation	Unconjugated
Purification	Affinity Purified
Dilution Range	WB: 1:2, 500-1:5, 000 ELISA: 1:50, 000 IP: 1:200
Formulation	Contains Tris, HCl/Glycine buffer pH 7.4-7.8, 30% Glycerol and 0.5% BSA, along with cryo-protective agents, Hepes, and long-term preservatives (0.02% Sodium Azide).
Isotype	IgG
Storage Instruction	Store at -20°C for long term storage. Avoid freeze-thaw cycles.

TARGET INFORMATION

Gene ID	12514
Gene Symbol	Cd68
Uniprot ID	CD68_MOUSE
Immunogen	Synthetic peptide taken within amino acid region 240-290 on mouse CD68/Macrosialin protein.
Immunogen Region	240-290
Specificity	
Immunogen Sequence	



Western blot with Anti-CD68 Antibody (STJ500480) of mouse liver at 1:500 dilution in buffer.