

Anti-CD163 antibody (600-650) (STJ500423)

STJ500423

GENERAL INFORMATION

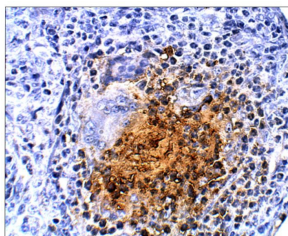
Product Type	Primary antibodies
Short Description	Rabbit polyclonal antibody anti-CD163 (600-650) is suitable for use in ELISA, Confocal Microscopy, Immunocytochemistry, Immunofluorescence, Immunohistochemistry, Immunoprecipitation and Western Blot research applications.
Applications	ELISA/CM/ICC/IF/IHC/IP/WB
Host/Source	Rabbit
Reactivity	Human/Monkey

PRODUCT PROPERTIES

Clonality	Polyclonal
Clone ID	
Concentration	0.55-0.75 µg/µl
Conjugation	Unconjugated
Purification	Affinity Purified
Dilution	WB: 1:500
Range	DB: 1:10, 000 ELISA: 1:10, 000 IP: 1:100 IHC: 1:150 IF: 1:100
Formulation	Contains Tris, HCl/Glycine buffer pH 7.4-7.8, 30% Glycerol and 0.5% BSA, along with cryo-protective agents, Hepes, and long-term preservatives (0.02% Sodium Azide).
Isotype	IgG
Storage	Store at -20°C for long term storage. Avoid freeze-thaw cycles.
Instruction	

TARGET INFORMATION

Gene ID	
Gene Symbol	
Uniprot ID	
Immunogen	Synthetic peptide taken within amino acid region 600-650 on human CD163 protein.
Immunogen	600-650
Region	
Specificity	
Immunogen	
Sequence	



Immunohistochemistry of baboon lung with Anti-CD163 primary antibody (STJ500423) at 1:100 dilution in Buffer. Section was treated with DAB and Haematoxylin stain. Magnification is at 40X.

This product is suitable for in-vitro studies under the RESEARCH USE ONLY [RUO] licence. This product must not be used as for diagnostic or other medical purposes.
St John's Laboratory Ltd, Knowledge Dock Business Centre, University Way, London, E16 2RD | Tel: 0208 223 3081