

Anti-CCR5 antibody (1-100) (STJ500415)

STJ500415

GENERAL INFORMATION

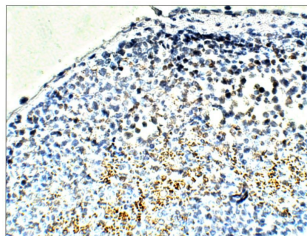
Product Type	Primary antibodies
Short Description	Rabbit polyclonal antibody anti-CCR5 (1-100) is suitable for use in ELISA, Immunohistochemistry, Immunoprecipitation and Western Blot research applications.
Applications	ELISA/IHC/IP/WB
Host/Source	Rabbit
Reactivity	Human/Mouse

PRODUCT PROPERTIES

Clonality	Polyclonal
Clone ID	
Concentration	0.55-0.68 µg/µl
Conjugation	Unconjugated
Purification	Affinity Purified
Dilution Range	WB: 1:500 DB: 1:10, 000 ELISA: 1:10, 000 IP: 1:250 IHC: 1:100
Formulation	Contains Tris, HCl/Glycine buffer pH 7.4-7.8, 30% Glycerol and 0.5% BSA, along with cryo-protective agents, Hepes, and long-term preservatives (0.02% Sodium Azide).
Isotype	IgG
Storage Instruction	Store at -20°C for long term storage. Avoid freeze-thaw cycles.

TARGET INFORMATION

Gene ID	1234
Gene Symbol	CCR5
Uniprot ID	CCR5_HUMAN
Immunogen	Synthetic peptide taken within amino acid region 1-100 on human C-C chemokine receptor type 6 protein.
Immunogen Region	1-100
Specificity	
Immunogen Sequence	



Immunohistochemistry with Anti-CCR5 Antibody (STJ500415) at 1:100 dilution in Buffer. DAB (brown) staining and Haematoxylin QS (blue) counterstain. 40X magnification on Leica DM4000B. FFPE section.

This product is suitable for in-vitro studies under the RESEARCH USE ONLY [RUO] licence. This product must not be used as for diagnostic or other medical purposes.
St John's Laboratory Ltd, Knowledge Dock Business Centre, University Way, London, E16 2RD | Tel: 0208 223 3081