

Anti-CCR5 antibody (1-50) (STJ500411)

STJ500411

GENERAL INFORMATION

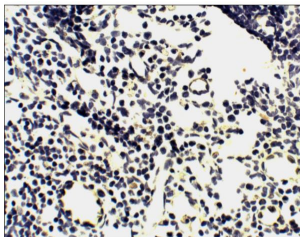
Product Type	Primary antibodies
Short Description	Rabbit polyclonal antibody anti-CCR5 (1-50) is suitable for use in ELISA and Western Blot research applications.
Applications	ELISA/WB
Host/Source	Rabbit
Reactivity	Human/Monkey/Rat

PRODUCT PROPERTIES

Clonality	Polyclonal
Clone ID	
Concentration	0.64-0.70 µg/µl
Conjugation	Unconjugated
Purification	Affinity Purified
Dilution Range	WB: 1:500 DB: 1:10, 000 ELISA: 1:10, 000 IP: 1:200 IHC: 1:100
Formulation	Contains Tris, HCl/Glycine buffer pH 7.4-7.8, 30% Glycerol and 0.5% BSA, along with cryo-protective agents, Hepes, and long-term preservatives (0.02% Sodium Azide).
Isotype	IgG
Storage Instruction	Store at -20°C for long term storage. Avoid freeze-thaw cycles.

TARGET INFORMATION

Gene ID	1234
Gene Symbol	CCR5
Uniprot ID	CCR5_HUMAN
Immunogen	Synthetic peptide taken within amino acid region 1-50 on human CCR5 protein.
Immunogen Region	1-50
Specificity	
Immunogen Sequence	



Immunohistochemistry of rat tissue with Anti-CCR5 primary antibody (STJ500411) at 1:100 dilution in Buffer. Section was treated with DAB and Haematoxylin stain. Magnification is at 40X.