

Anti-CCR4 antibody (1-50) (STJ500405)

STJ500405

GENERAL INFORMATION

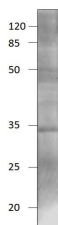
Product Type	Primary antibodies
Short Description	Rabbit polyclonal antibody anti-CCR4 (1-50) is suitable for use in Confocal Microscopy, Dot Blot, ELISA, Immunofluorescence, Immunohistochemistry, Immunoprecipitation and Western Blot research applications.
Applications	CF/DB/ELISA/IF/IHC/IP/WB
Host/Source	Rabbit
Reactivity	Cat/Human/Monkey/Mouse/Rat

PRODUCT PROPERTIES

Clonality	Polyclonal
Clone ID	
Concentration	0.68 µg/µl
Conjugation	Unconjugated
Purification	Affinity Purified
Dilution Range	WB: 1:500 IP: 1:250 IHC: 1:250 ICC: 1:250 IF: 1:250 CFM: 1:250
Formulation	Contains Tris, HCl/Glycine buffer pH 7.4-7.8, 30% Glycerol and 0.5% BSA, along with cryo-protective agents, Hepes, and long-term preservatives (0.02% Sodium Azide).
Isotype	IgG
Storage Instruction	Store at -20°C for long term storage. Avoid freeze-thaw cycles.

TARGET INFORMATION

Gene ID	1233
Gene Symbol	CCR4
Uniprot ID	CCR4_HUMAN
Immunogen	Synthetic peptide taken within amino acid region 1-50 on human C-C chemokine receptor type 4 protein.
Immunogen Region	1-50
Specificity	
Immunogen Sequence	



Western blot with Anti-CCR4 Antibody (STJ500405) and peptide at 1:250 dilution in buffer on a 14% SDS gel.

This product is suitable for in-vitro studies under the RESEARCH USE ONLY [RUO] licence. This product must not be used as for diagnostic or other medical purposes.
St John's Laboratory Ltd, Knowledge Dock Business Centre, University Way, London, E16 2RD | Tel: 0208 223 3081