

Anti-CCR3 antibody (1-50) (STJ500402)

STJ500402

GENERAL INFORMATION

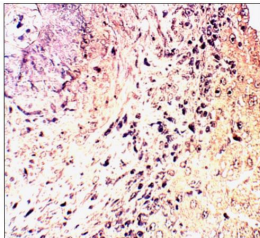
Product Type	Primary antibodies
Short Description	Rabbit polyclonal antibody anti-CCR3 (1-50) is suitable for use in ELISA, Immunohistochemistry, Immunoprecipitation and Western Blot research applications.
Applications	ELISA/IHC/IP/WB
Host/Source	Rabbit
Reactivity	Human/Monkey

PRODUCT PROPERTIES

Clonality	Polyclonal
Clone ID	
Concentration	0.60-0.70 µg/µl
Conjugation	Unconjugated
Purification	Affinity Purified
Dilution Range	WB: 1:500 DB: 1:10, 000 ELISA: 1:10, 000 IP: 1:200 IHC: 1:100
Formulation	Contains Tris, HCl/Glycine buffer pH 7.4-7.8, 30% Glycerol and 0.5% BSA, along with cryo-protective agents, Hepes, and long-term preservatives (0.02% Sodium Azide).
Isotype	IgG
Storage Instruction	Store at -20°C for long term storage. Avoid freeze-thaw cycles.

TARGET INFORMATION

Gene ID	1232
Gene Symbol	CCR3
Uniprot ID	CCR3_HUMAN
Immunogen	Synthetic peptide taken within amino acid region 1-50 on human CCR3 protein.
Immunogen Region	1-50
Specificity	
Immunogen Sequence	



Immunohistochemistry of baboon liver with Anti-CCR3 primary antibody (STJ500402) at 1:100 dilution in Buffer. Section was treated with DAB and Haematoxylin stain.