

Anti-CAMK2G antibody (400-455) (STJ500361)

STJ500361

GENERAL INFORMATION

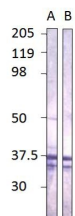
Product Type	Primary antibodies
Short Description	Rabbit polyclonal antibody anti-CAMK2G (400-455) is suitable for use in Confocal Microscopy, Dot Blot, ELISA, Immunofluorescence, Immunohistochemistry, Immunoprecipitation and Western Blot research applications.
Applications	CM/DB/ELISA/IF/IHC/IP/WB
Host/Source	Rabbit
Reactivity	Human/Mouse

PRODUCT PROPERTIES

Clonality	Polyclonal
Clone ID	
Concentration	0.8 µg/µl
Conjugation	Unconjugated
Purification	Affinity Purified
Dilution Range	WB: 1:500 DB: 1:10, 000 ELISA: 1:10, 000 IP: 1:200 IHC: 1:200 ICC: 1:200 IF: 1:200 CFM: 1:200
Formulation	Contains Tris, HCl/Glycine buffer pH 7.4-7.8, 30% Glycerol and 0.5% BSA, along with cryo-protective agents, Hepes, and long-term preservatives (0.02% Sodium Azide).
Isotype	IgG
Storage Instruction	Store at -20°C for long term storage. Avoid freeze-thaw cycles.

TARGET INFORMATION

Gene ID	818
Gene Symbol	CAMK2G
Uniprot ID	KCC2G_HUMAN
Immunogen	Synthetic peptide taken within amino acid region 400-455 on human CAMKII gamma protein.
Immunogen Region	400-455
Specificity	This antibody is specific for the gamma isoform only. It will not cross react with the other isoforms such as alpha, beta or delta.
Immunogen Sequence	



Western blot with Preimmune (A) and Anti-CAMK2G Antibody (STJ500361) (B), with peptide on at 1:500 dilution in buffer.

This product is suitable for in-vitro studies under the RESEARCH USE ONLY [RUO] licence. This product must not be used as for diagnostic or other medical purposes.
St John's Laboratory Ltd, Knowledge Dock Business Centre, University Way, London, E16 2RD | Tel: 0208 223 3081