

Anti-CEP19 antibody (120-170) (STJ500324)

STJ500324

GENERAL INFORMATION

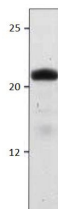
Product Type	Primary antibodies
Short Description	Rabbit polyclonal antibody anti-CEP19 (120-170) is suitable for use in Dot Blot, ELISA and Western Blot research applications.
Applications	DB/ELISA/WB
Host/Source	Rabbit
Reactivity	Human

PRODUCT PROPERTIES

Clonality	Polyclonal
Clone ID	
Concentration	
Conjugation	Unconjugated
Purification	Affinity Purified
Dilution Range	WB: 1:500-1:1, 000 DB: 1:2, 000 ELISA: 1:2, 000 IP: 1:200
Formulation	Contains Tris, HCl/Glycine buffer pH 7.4-7.8, 30% Glycerol and 0.5% BSA, along with cryo-protective agents, Hepes, and long-term preservatives (0.02% Sodium Azide).
Isotype	IgG
Storage Instruction	Store at -20°C for long term storage. Avoid freeze-thaw cycles.

TARGET INFORMATION

Gene ID	84984
Gene Symbol	CEP19
Uniprot ID	CEP19_HUMAN
Immunogen	Synthetic peptide taken within amino acid region 120-170 on human Chromosome open reading frame 34 protein.
Immunogen Region	120-170
Specificity	
Immunogen Sequence	



Western blot with Anti-CEP19 Antibody (STJ500324) with peptide on at 1:500 dilution in buffer.

This product is suitable for in-vitro studies under the RESEARCH USE ONLY [RUO] licence. This product must not be used as for diagnostic or other medical purposes.
St John's Laboratory Ltd, Knowledge Dock Business Centre, University Way, London, E16 2RD | Tel: 0208 223 3081