

Anti-BTBD7 antibody (1050-1150) (STJ500297)

STJ500297

GENERAL INFORMATION

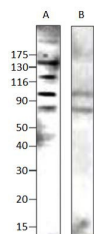
Product Type	Primary antibodies
Short Description	Rabbit polyclonal antibody anti-BTBD7 (1050-1150) is suitable for use in Confocal Microscopy, ELISA, Immunocytochemistry, Immunofluorescence, Immunohistochemistry, Immunoprecipitation and Western Blot research applications.
Applications	CM/ELISA/ICC/IF/IHC/IP/WB
Host/Source	Rabbit
Reactivity	Human/Mouse

PRODUCT PROPERTIES

Clonality	Polyclonal
Clone ID	
Concentration	0.61-0.68 µg/µl
Conjugation	Unconjugated
Purification	Affinity Purified
Dilution Range	WB: 1:500 DB: 1:10, 000 ELISA: 1:10, 000 IP: 1:200 IHC: 1:200 ICC: 1:200 CFM: 1:200
Formulation	Contains Tris, HCl/Glycine buffer pH 7.4-7.8, 30% Glycerol and 0.5% BSA, along with cryo-protective agents, Hepes, and long-term preservatives (0.02% Sodium Azide).
Isotype	IgG
Storage Instruction	Store at -20°C for long term storage. Avoid freeze-thaw cycles.

TARGET INFORMATION

Gene ID	55727
Gene Symbol	BTBD7
Uniprot ID	BTBD7_HUMAN
Immunogen	Synthetic peptide taken within amino acid region 1050-1150 on human BTBD7 protein.
Immunogen Region	1050-1150
Specificity	
Immunogen Sequence	



Western blot with Anti-BTBD7 Antibody (STJ500297) with peptide on Immune serum (A) and pre-immune (B) at 1:500 dilution in buffer.