

Anti-BST1 antibody (255-274) (STJ500285)

STJ500285

GENERAL INFORMATION

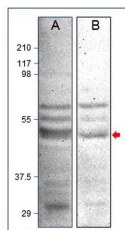
Product Type	Primary antibodies
Short Description	Rabbit polyclonal antibody anti-BST1 (255-274) is suitable for use in ELISA, Confocal Microscopy, Immunocytochemistry, Immunofluorescence, Immunohistochemistry, Immunoprecipitation and Western Blot research applications.
Applications	ELISA/CM/ICC/IF/IHC/IP/WB
Host/Source	Rabbit
Reactivity	Human/Mouse/Rat

PRODUCT PROPERTIES

Clonality	Polyclonal
Clone ID	
Concentration	0.68 µg/µl
Conjugation	Unconjugated
Purification	Affinity Purified
Dilution	WB: 1:500
Range	DB: 1:10, 000 ELISA: 1:10, 000 IHC: 1:200 ICC: 1:200 IF: 1:200 CFM: 1:200
Formulation	Contains Tris, HCl/Glycine buffer pH 7.4-7.8, 30% Glycerol and 0.5% BSA, along with cryo-protective agents, Hepes, and long-term preservatives (0.02% Sodium Azide).
Isotype	IgG
Storage Instruction	Store at -20°C for long term storage. Avoid freeze-thaw cycles.

TARGET INFORMATION

Gene ID	683
Gene Symbol	BST1
Uniprot ID	BST1_HUMAN
Immunogen	Synthetic peptide corresponding to amino acids 255-274 of Human Bone marrow stromal cell antigen 1. Peptide was covalently modified.
Immunogen Region	255-274
Specificity	Does not cross react to other members of the Ras family or to other ARF members.
Immunogen Sequence	



Western blot with Anti-BST1 Antibody (STJ500285) of
1) Chondrocytes and 2) SKNMC cells at 1:500 dilution
in buffer.

This product is suitable for in-vitro studies under the RESEARCH USE ONLY [RUO] licence. This product must not be used as for diagnostic or other medical purposes.
St John's Laboratory Ltd, Knowledge Dock Business Centre, University Way, London, E16 2RD | Tel: 0208 223 3081