

## Anti-BMP8B antibody (160-200) (STJ500265)

STJ500265

### GENERAL INFORMATION

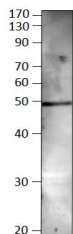
<b>Product Type</b>	Primary antibodies
<b>Short Description</b>	Rabbit polyclonal antibody anti-BMP8B (160-200) is suitable for use in ELISA and Western Blot research applications.
<b>Applications</b>	ELISA/WB
<b>Host/Source</b>	Rabbit
<b>Reactivity</b>	Human/Mouse/Rat

### PRODUCT PROPERTIES

<b>Clonality</b>	Polyclonal
<b>Clone ID</b>	
<b>Concentration</b>	0.57-0.68 µg/µl
<b>Conjugation</b>	Unconjugated
<b>Purification</b>	Affinity Purified
<b>Dilution Range</b>	WB: 1:500-1:1, 000 DB: 1:2, 000 ELISA: 1:2, 000 IP: 1:200
<b>Formulation</b>	Contains Tris, HCl/Glycine buffer pH 7.4-7.8, 30% Glycerol and 0.5% BSA, along with cryo-protective agents, Hepes, and long-term preservatives (0.02% Sodium Azide).
<b>Isotype</b>	IgG
<b>Storage Instruction</b>	Store at -20°C for long term storage. Avoid freeze-thaw cycles.

### TARGET INFORMATION

<b>Gene ID</b>	656
<b>Gene Symbol</b>	BMP8B
<b>Uniprot ID</b>	BMP8B_HUMAN
<b>Immunogen</b>	Synthetic peptide taken within amino acid region 160-200 on human BMP8 protein
<b>Immunogen Region</b>	160-200
<b>Specificity</b>	
<b>Immunogen Sequence</b>	



Western blot with Anti-BMP8B Antibody (STJ500265) with peptide on at 1:500 dilution in buffer.