

Anti-BMP2 antibody (45-60) (STJ500263)

STJ500263

GENERAL INFORMATION

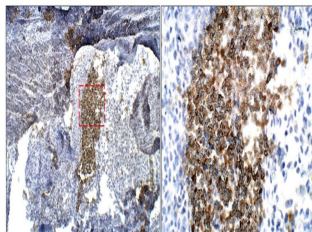
Product Type	Primary antibodies
Short Description	Rabbit polyclonal antibody anti-BMP2 (45-60) is suitable for use in Confocal Microscopy, ELISA, Immunocytochemistry, Immunofluorescence, Immunohistochemistry, Immunoprecipitation and Western Blot research applications.
Applications	CM/ELISA/ICC/IF/IHC/IP/WB
Host/Source	Rabbit
Reactivity	Human/Monkey/Mouse/Pig

PRODUCT PROPERTIES

Clonality	Polyclonal
Clone ID	
Concentration	0.73 µg/µl
Conjugation	Unconjugated
Purification	Affinity Purified
Dilution Range	WB: 1:500-1:1000 DB: 1:2, 000 ELISA: 1:2, 000 IP: 1:200 IHC: 1:200-1:500 ICC: 1:200 IF: 1:200 CFM: 1:200
Formulation	Contains Tris, HCl/Glycine buffer pH 7.4-7.8, 30% Glycerol and 0.5% BSA, along with cryo-protective agents, Hepes, and long-term preservatives (0.02% Sodium Azide).
Isotype	IgG
Storage Instruction	Store at -20°C for long term storage. Avoid freeze-thaw cycles.

TARGET INFORMATION

Gene ID	12156
Gene Symbol	Bmp2
Uniprot ID	BMP2_MOUSE
Immunogen	Synthetic peptide corresponding to Mouse BMP2 amino acid region 45-60 conjugated to Keyhole Limpet Haemocyanin (KLH).
Immunogen Region	45-60
Specificity	
Immunogen Sequence	



Immunohistochemistry of mouse tissue with Anti-BMP2 primary antibody (STJ500263) at 1:50 dilution in Buffer. Section was treated with DAB and Haematoxylin stain. Magnification is at 5X.