

Anti-BEST3 antibody (C-Term) (STJ500235)

STJ500235

GENERAL INFORMATION

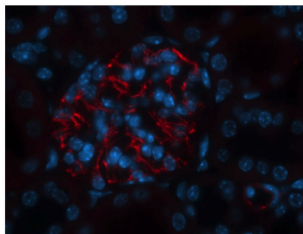
Product Type	Primary antibodies
Short Description	Rabbit polyclonal antibody anti-BEST3 (C-Term) is suitable for use in Confocal Microscopy, ELISA, Immunofluorescence, Immunohistochemistry, Immunoprecipitation and Western Blot research applications.
Applications	CM/ELISA/IF/IHC/IP/WB
Host/Source	Rabbit
Reactivity	Mouse/Rat

PRODUCT PROPERTIES

Clonality	Polyclonal
Clone ID	
Concentration	0.5 µg/µl
Conjugation	Unconjugated
Purification	Affinity Purified
Dilution Range	WB: 1:500-1:1, 000 DB: 1:10, 000 ELISA: 1:10, 000 IP: 1:200 IHC: 1:200 ICC: 1:200 IF: 1:200 CFM: 1:200
Formulation	Contains Tris, HCl/Glycine buffer pH 7.4-7.8, 30% Glycerol and 0.5% BSA, along with cryo-protective agents, Hepes, and long-term preservatives (0.02% Sodium Azide).
Isotype	IgG
Storage Instruction	Store at -20°C for long term storage. Avoid freeze-thaw cycles.

TARGET INFORMATION

Gene ID	382427
Gene Symbol	Best3
Uniprot ID	BEST3_MOUSE
Immunogen	Synthetic peptide taken within the last 50 amino acids from the C-terminus of rat Bestrophin-3 protein.
Immunogen Region	C-Term
Specificity	
Immunogen Sequence	



Immunohistochemistry with Anti-Bestrophin 3 Antibody (STJ500235) of Mouse at 1:100 dilution in buffer. PFA-Fixed, paraffin embedded. Incubation for 36 h at 4°C. Requires antigen retrieval for paraformaldehyde-fixed specimens.