

Anti-BCL2L1 antibody (150-200) (STJ500216)

STJ500216

GENERAL INFORMATION

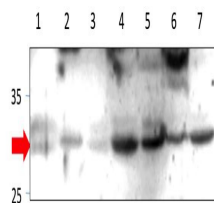
Product Type	Primary antibodies
Short Description	Rabbit polyclonal antibody anti-BCL2L1 (150-200) is suitable for use in ELISA, Immunohistochemistry, Immunoprecipitation and Western Blot research applications.
Applications	ELISA/IHC/IP/WB
Host/Source	Rabbit
Reactivity	Human/Mouse/Rat

PRODUCT PROPERTIES

Clonality	Polyclonal
Clone ID	
Concentration	0.50 µg/µl
Conjugation	Unconjugated
Purification	Affinity Purified
Dilution Range	WB: 1:500 ELISA: 1:10, 000 IP: 1:150 IHC: 1:50-1:100
Formulation	Contains Tris, HCl/Glycine buffer pH 7.4-7.8, 30% Glycerol and 0.5% BSA, along with cryo-protective agents, Hepes, and long-term preservatives (0.02% Sodium Azide).
Isotype	IgG
Storage Instruction	Store at -20°C for long term storage. Avoid freeze-thaw cycles.

TARGET INFORMATION

Gene ID	598
Gene Symbol	BCL2L1
Uniprot ID	B2CL1_HUMAN
Immunogen	Synthetic peptide taken within amino acid region 150-200 on human BCL-2-like protein 1.
Immunogen Region	150-200
Specificity	
Immunogen Sequence	



Western blot with Anti-BCL2L1 Antibody (STJ500216) on mouse tissues: Kidney, Brain, liver, Tongue, Spinal cord, Cerebellum and Skeletal muscle. at 1:500 dilution in buffer.