

Anti-BCKDK antibody (170-200) (STJ500213)

STJ500213

GENERAL INFORMATION

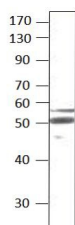
Product Type	Primary antibodies
Short Description	Rabbit polyclonal antibody anti-BCKDK (170-200) is suitable for use in ELISA and Western Blot research applications.
Applications	ELISA/WB
Host/Source	Rabbit
Reactivity	Human/Mouse/Rat

PRODUCT PROPERTIES

Clonality	Polyclonal
Clone ID	
Concentration	0.55 µg/µl
Conjugation	Unconjugated
Purification	Affinity Purified
Dilution Range	WB: 1:500 DB: 1:10, 000 ELISA: 1:10, 000 IP: 1:200
Formulation	Contains Tris, HCl/Glycine buffer pH 7.4-7.8, 30% Glycerol and 0.5% BSA, along with cryo-protective agents, Hepes, and long-term preservatives (0.02% Sodium Azide).
Isotype	IgG
Storage Instruction	Store at -20°C for long term storage. Avoid freeze-thaw cycles.

TARGET INFORMATION

Gene ID	10295
Gene Symbol	BCKDK
Uniprot ID	BCKD_HUMAN
Immunogen	Synthetic peptide taken within amino acid region 170-200 on human BCKD protein.
Immunogen Region	170-200
Specificity	
Immunogen Sequence	



Western blot with Anti-BCKDK Antibody (STJ500213) with peptide on at 1:500 dilution in buffer.