

## Anti-ARHGEF7 antibody (595-805) (STJ500159)

STJ500159

### GENERAL INFORMATION

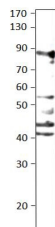
<b>Product Type</b>	Primary antibodies
<b>Short Description</b>	Rabbit polyclonal antibody anti-ARHGEF7 (595-805) is suitable for use in ELISA and Western Blot research applications.
<b>Applications</b>	ELISA/WB
<b>Host/Source</b>	Rabbit
<b>Reactivity</b>	Human/Mouse/Rat

### PRODUCT PROPERTIES

<b>Clonality</b>	Polyclonal
<b>Clone ID</b>	
<b>Concentration</b>	0.59 µg/µl
<b>Conjugation</b>	Unconjugated
<b>Purification</b>	Affinity Purified
<b>Dilution Range</b>	WB: 1:500 DB: 1:10, 000 ELISA: 1:10, 000 IP: 1:200
<b>Formulation</b>	Contains Tris, HCl/Glycine buffer pH 7.4-7.8, 30% Glycerol and 0.5% BSA, along with cryo-protective agents, Hepes, and long-term preservatives (0.02% Sodium Azide).
<b>Isotype</b>	IgG
<b>Storage Instruction</b>	Store at -20°C for long term storage. Avoid freeze-thaw cycles.

### TARGET INFORMATION

<b>Gene ID</b>	8874
<b>Gene Symbol</b>	ARHGEF7
<b>Uniprot ID</b>	ARHG7_HUMAN
<b>Immunogen</b>	Synthetic peptide taken within amino acid region 595-805 on human ARHGEF7 protein.
<b>Immunogen Region</b>	595-805
<b>Specificity</b>	
<b>Immunogen Sequence</b>	



Western blot with Anti-ARHGEF7 Antibody (STJ500159) of MDA cell at 1:500 dilution in buffer.