

## Anti-APH1B antibody (235-257) (STJ500105)

STJ500105

### GENERAL INFORMATION

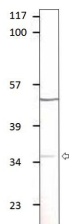
<b>Product Type</b>	Primary antibodies
<b>Short Description</b>	Rabbit polyclonal antibody anti-APH1B (235-257) is suitable for use in ELISA and Western Blot research applications.
<b>Applications</b>	ELISA/WB
<b>Host/Source</b>	Rabbit
<b>Reactivity</b>	C.elegans/Human/Mouse/Rat

### PRODUCT PROPERTIES

<b>Clonality</b>	Polyclonal
<b>Clone ID</b>	
<b>Concentration</b>	0.6 µg/µl
<b>Conjugation</b>	Unconjugated
<b>Purification</b>	Affinity Purified
<b>Dilution Range</b>	WB: 1:500 DB: 1:10, 000 ELISA: 1:10, 000
<b>Formulation</b>	Contains Tris, HCl/Glycine buffer pH 7.4-7.8, 30% Glycerol and 0.5% BSA, along with cryo-protective agents, Hepes, and long-term preservatives (0.02% Sodium Azide).
<b>Isotype</b>	IgG
<b>Storage Instruction</b>	Store at -20°C for long term storage. Avoid freeze-thaw cycles.

### TARGET INFORMATION

<b>Gene ID</b>	83464
<b>Gene Symbol</b>	APH1B
<b>Uniprot ID</b>	APH1B_HUMAN
<b>Immunogen</b>	Synthetic peptide taken within amino acid region 235-257 of Human Presenilin stabilizing protein.
<b>Immunogen Region</b>	235-257
<b>Specificity</b>	Does not cross react to other component of gamma secretase complex nor with other proteins.
<b>Immunogen Sequence</b>	



Western blot with Anti-APH1B Antibody (STJ500105) with peptide on at 1:500 dilution in buffer.