

Anti-ANXA1 antibody (1-50) (STJ500090)

STJ500090

GENERAL INFORMATION

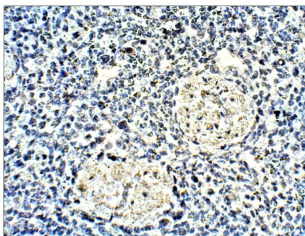
Product Type	Primary antibodies
Short Description	Rabbit polyclonal antibody anti-ANXA1 (1-50) is suitable for use in ELISA, Immunohistochemistry, Immunoprecipitation and Western Blot research applications.
Applications	ELISA/IHC/IP/WB
Host/Source	Rabbit
Reactivity	Human/Monkey/Mouse/Rat

PRODUCT PROPERTIES

Clonality	Polyclonal
Clone ID	
Concentration	0.55-0.75 µg/µl
Conjugation	Unconjugated
Purification	Affinity Purified
Dilution Range	WB: 1:500 DB: 1:10, 000 ELISA: 1:10, 000 IP: 1:200 IHC: 1:100
Formulation	Contains Tris, HCl/Glycine buffer pH 7.4-7.8, 30% Glycerol and 0.5% BSA, along with cryo-protective agents, Hepes, and long-term preservatives (0.02% Sodium Azide).
Isotype	IgG
Storage Instruction	Store at -20°C for long term storage. Avoid freeze-thaw cycles.

TARGET INFORMATION

Gene ID	301
Gene Symbol	ANXA1
Uniprot ID	ANXA1_HUMAN
Immunogen	Synthetic peptide taken within amino acid region 1-50 on human annexin A1 protein.
Immunogen Region	1-50
Specificity	This antibody will only detect Annexin A1 protein. The antibody will detect soluble Annexin A1.
Immunogen Sequence	



Immunohistochemistry of baboon spleen with Anti-ANXA1 primary antibody (STJ500090) at 1:100 dilution in Buffer. Section was treated with DAB and Haematoxylin stain. Magnification is at 40X.