

Anti-AMACR antibody (50-100) (STJ500069)

STJ500069

GENERAL INFORMATION

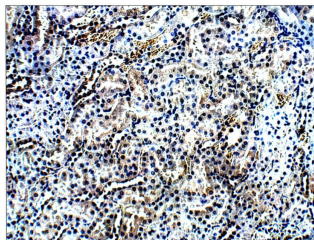
Product Type	Primary antibodies
Short Description	Rabbit polyclonal antibody anti-AMACR (50-100) is suitable for use in Confocal Microscopy, Dot Blot, ELISA, Immunocytochemistry, Immunofluorescence, Immunohistochemistry, Immunoprecipitation and Western Blot research applications.
Applications	CM/DB/ELISA/ICC/IF/IHC/IP/WB
Host/Source	Rabbit
Reactivity	Human/Rat

PRODUCT PROPERTIES

Clonality	Polyclonal
Clone ID	
Concentration	0.6 µg/µl
Conjugation	Unconjugated
Purification	Affinity Purified
Dilution Range	WB: 1:500 DB: 1:10, 000 ELISA: 1:10, 000 IP: 1:200 IHC: 1:100 ICC: 1:100 IF: 1:200 CFM: 1:100
Formulation	Contains Tris, HCl/Glycine buffer pH 7.4-7.8, 30% Glycerol and 0.5% BSA, along with cryo-protective agents, Hepes, and long-term preservatives (0.02% Sodium Azide).
Isotype	IgG
Storage Instruction	Store at -20°C for long term storage. Avoid freeze-thaw cycles.

TARGET INFORMATION

Gene ID	23600
Gene Symbol	AMACR
Uniprot ID	AMACR_HUMAN
Immunogen	Synthetic peptide taken within amino acid region 50-100 on human alpha-methylacyl-CoA racemase protein.
Immunogen Region	50-100
Specificity	
Immunogen Sequence	



Immunohistochemistry of rat kidney with Anti-AMACR primary antibody (STJ500069) at 1:100 dilution in Buffer. Section was treated with DAB and Haematoxylin stain. Magnification is at 20X.