

## Anti-Atypical Chemokine Receptor D6 antibody (300-378) {FITC} (STJ500035)

STJ500035

### GENERAL INFORMATION

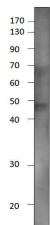
<b>Product Type</b>	Primary antibodies
<b>Short Description</b>	Rabbit polyclonal antibody anti-Atypical Chemokine Receptor D6 (300-378) is suitable for use in ELISA and Western Blot research applications.
<b>Applications</b>	ELISA/WB
<b>Host/Source</b>	Rabbit
<b>Reactivity</b>	Mouse/Rat

### PRODUCT PROPERTIES

<b>Clonality</b>	Polyclonal
<b>Clone ID</b>	
<b>Concentration</b>	0.55-0.75 µg/µl
<b>Conjugation</b>	FITC
<b>Purification</b>	Affinity Purified
<b>Dilution Range</b>	WB: 1:500 DB: 1:10, 000 ELISA: 1:10, 000 IP: 1:200 IHC: 1:50-1:150
<b>Formulation</b>	Contains Tris, HCl/Glycine buffer pH 7.4-7.8, 30% Glycerol and 0.5% BSA, along with cryo-protective agents, Hepes, and long-term preservatives (0.02% Sodium Azide).
<b>Isotype</b>	IgG
<b>Storage Instruction</b>	Store at -20°C for long term storage. Avoid freeze-thaw cycles.

### TARGET INFORMATION

<b>Gene ID</b>	59289
<b>Gene Symbol</b>	Ackr2
<b>Uniprot ID</b>	ACKR2_MOUSE
<b>Immunogen</b>	Synthetic peptide taken within amino acid region 300-378 mouse Atypical chemokine receptor 2 protein.
<b>Immunogen Region</b>	300-378
<b>Specificity</b>	
<b>Immunogen Sequence</b>	



Western blot with Anti-Atypical Chemokine Receptor D6 Antibody (FITC) (STJ500035) of rat lung at 1:500 dilution in buffer.