

## Anti-ACKR2 antibody (200-300) {FITC} (STJ500033)

STJ500033

### GENERAL INFORMATION

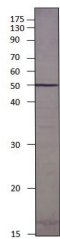
|                          |  |
|--------------------------|--|
| <b>Product Type</b>      | Primary antibodies   |
| <b>Short Description</b> | Rabbit polyclonal antibody anti-ACKR2 (200-300) is suitable for use in ELISA and Western Blot research applications. |
| <b>Applications</b>      | ELISA/WB   |
| <b>Host/Source</b>       | Rabbit   |
| <b>Reactivity</b>        | Human/Mouse/Rat  |

### PRODUCT PROPERTIES

|                            |  |
|----------------------------|--|
| <b>Clonality</b>           | Polyclonal   |
| <b>Clone ID</b>            |  |
| <b>Concentration</b>       | 0.55-0.75 µg/µl  |
| <b>Conjugation</b>         | FITC   |
| <b>Purification</b>        | Affinity Purified  |
| <b>Dilution Range</b>      | WB: 1:500<br>DB: 1:10, 000<br>ELISA: 1:10, 000   |
| <b>Formulation</b>         | Contains Tris, HCl/Glycine buffer pH 7.4-7.8, 30% Glycerol and 0.5% BSA, along with cryo-protective agents, Hepes, and long-term preservatives (0.02% Sodium Azide). |
| <b>Isotype</b>             | IgG  |
| <b>Storage Instruction</b> | Store at -20°C for long term storage. Avoid freeze-thaw cycles.  |

### TARGET INFORMATION

|                           |  |
|---------------------------|--|
| <b>Gene ID</b>            | 1238   |
| <b>Gene Symbol</b>        | ACKR2  |
| <b>Uniprot ID</b>         | ACKR2_HUMAN  |
| <b>Immunogen</b>          | Synthetic peptide taken within amino acid region 200-300 on ACRD6 protein. |
| <b>Immunogen Region</b>   | 200-300  |
| <b>Specificity</b>        |  |
| <b>Immunogen Sequence</b> |  |



Western blot with Anti-ACKR2 Antibody (FITC) (STJ500033) with peptide on at 1:500 dilution in buffer.