

Anti-ABL1 antibody (990-1130) (STJ500018)

STJ500018

GENERAL INFORMATION

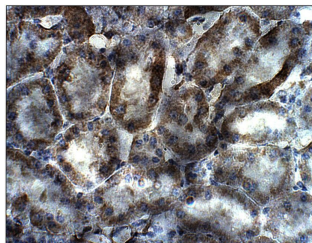
Product Type	Primary antibodies
Short Description	Rabbit polyclonal antibody anti-ABL1 (990-1130) is suitable for use in ELISA, Immunohistochemistry, Immunoprecipitation and Western Blot research applications.
Applications	ELISA/IHC/IP/WB
Host/Source	Rabbit
Reactivity	Human/Mouse/Rat

PRODUCT PROPERTIES

Clonality	Polyclonal
Clone ID	
Concentration	0.5 µg/µl
Conjugation	Unconjugated
Purification	Affinity Purified
Dilution Range	WB: 1:500 ELISA: 1:10, 000 IP: 1:200 IHC: 1:50-1:100
Formulation	Contains Tris, HCl/Glycine buffer pH 7.4-7.8, 30% Glycerol and 0.5% BSA, along with cryo-protective agents, Hepes, and long-term preservatives (0.02% Sodium Azide).
Isotype	IgG
Storage	Store at -20°C for long term storage. Avoid freeze-thaw cycles.
Instruction	

TARGET INFORMATION

Gene ID	25
Gene Symbol	ABL1
Uniprot ID	ABL1_HUMAN
Immunogen	Synthetic peptide taken within amino acid region 990-1130 of human Isoform IB of Tyrosine-protein kinase ABL1 protein.
Immunogen Region	990-1130
Specificity	
Immunogen Sequence	



Immunohistochemistry of mouse kidney with Anti-ABL1 primary antibody (STJ500018) at 1:50 dilution in Buffer. Section was treated with DAB and Haematoxylin stain. Magnification is at 40X.