

Anti-GSTM3 antibody (101-225) (STJ29992)

STJ29992

GENERAL INFORMATION

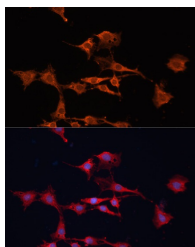
Product Type	Primary antibodies
Short Description	
Applications	WB/IF/ICC/ELISA
Host/Source	Rabbit
Reactivity	Human/Mouse/Rat

PRODUCT PROPERTIES

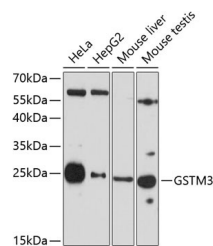
Clonality	Polyclonal
Clone ID	
Concentration	Lot specific
Conjugation	Unconjugated
Purification	Affinity purification
Dilution Range	WB:1:500-1:2000 IF/ICC:1:50-1:200 ELISA:Recommended starting concentration is 1 Mu g/mL. Please optimize the concentration based on your specific assay requirements.
Formulation	PBS with 0.01% Thimerosal, 50% Glycerol, pH 7.3.
Isotype	IgG
Storage Instruction	Store at -20°C for up to 1 year from the date of receipt, and avoid repeat freeze-thaw cycles.

TARGET INFORMATION

Gene ID	2947
Gene Symbol	GSTM3
Uniprot ID	GSTM3_HUMAN
Immunogen	
Immunogen Region	101-225
Specificity	Recombinant fusion protein containing a sequence corresponding to amino acids 101-225 of human GSTM3 (NP_000840.2).
Immunogen Sequence	VDIIENQVMDFRITQLIRLCY SSDHEKLKPQYLEELPGQLK QFSMFLGKFSWFAGEKLTFF DFLTYDILDQNRIFDPKCLD EFPNLKAFMCRFEALEKIAA YLQSDQFCKMPINNKAQWG NKPVC



Immunofluorescence analysis of C6 cells using GSTM3 Rabbit polyclonal antibody (STJ29992) at dilution of 1:100. Secondary antibody: Cy3 Goat Anti-Rabbit IgG (H+L) at 1:500 dilution. Blue: DAPI for nuclear staining.



Western blot analysis of various lysates using GSTM3 Rabbit polyclonal antibody (STJ29992) at 1:3000 dilution. Secondary antibody: HRP Goat Anti-Rabbit IgG (H+L) (STJS000856) at 1:10000 dilution. Lysates/proteins: 25 Mu g per lane. Blocking buffer: 3% nonfat dry milk in TBST. Detection: ECL Basic Kit. Exposure time: 90s.

This product is suitable for in-vitro studies under the RESEARCH USE ONLY [RUO] licence. This product must not be used as for diagnostic or other medical purposes.
St John's Laboratory Ltd, Knowledge Dock Business Centre, University Way, London, E16 2RD | Tel: 0208 223 3081