

**Anti-VEGFA antibody (68-147) (STJ29920)**  
STJ29920

**GENERAL INFORMATION**

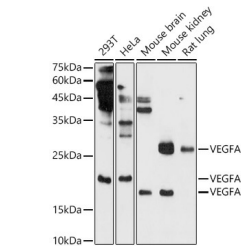
<b>Product Type</b>	Primary antibodies
<b>Short Description</b>	
<b>Applications</b>	WB/IF/CC/ELISA
<b>Host/Source</b>	Rabbit
<b>Reactivity</b>	Human/Mouse/Rat

**PRODUCT PROPERTIES**

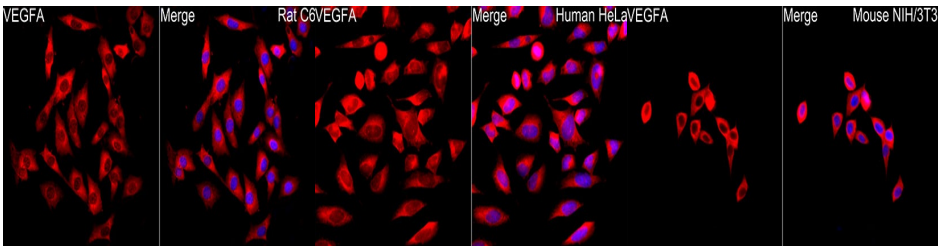
<b>Clonality</b>	Polyclonal
<b>Clone ID</b>	
<b>Concentration</b>	Lot specific
<b>Conjugation</b>	Unconjugated
<b>Purification</b>	Affinity purification
<b>Dilution Range</b>	WB:1:500-1:1000 IF/CC:1:50-1:200 ELISA:Recommended starting concentration is 1 Mu g/mL. Please optimize the concentration based on your specific assay requirements.
<b>Formulation</b>	PBS with 0.05% Proclin300, 50% Glycerol, pH 7.3.
<b>Isotype</b>	IgG
<b>Storage Instruction</b>	Store at-20°C for up to 1 year from the date of receipt, and avoid repeat freeze-thaw cycles.

**TARGET INFORMATION**

<b>Gene ID</b>	7422
<b>Gene Symbol</b>	VEGFA
<b>Uniprot ID</b>	VEGFA_HUMAN
<b>Immunogen</b>	
<b>Immunogen Region</b>	68-147
<b>Specificity</b>	A synthetic peptide corresponding to a sequence within amino acids 50-147 of human VEGFA (NP_001165099.1). SYCHPIETLVDFIQEYPDEI EYIFKPSCVPLMRCGGCCND EGLECVPTESNITMQIMRI KPHQGGHIGEMSFLQHKNCE
<b>Sequence</b>	CRPKKDRARQEKCCKPRR



Western blot analysis of extracts of various cell lines, using VEGFA antibody (STJ29920) at 1:1000 dilution. Secondary antibody: HRP Goat Anti-rabbit IgG (H+L) (STJ5000856) at 1:10000 dilution. Lysates/proteins: 25 Mu g per lane. Blocking buffer: 3% non-fat dry milk in TBST. Detection: ECL Basic Kit. Exposure time: 180s.



Immunofluorescence analysis of C6 cells using VEGFA rabbit polyclonal antibody (STJ29920) at dilution of 1:100 (40x lens). Blue: DAPI for nuclear staining.

Immunofluorescence analysis of HeLa cells using VEGFA rabbit polyclonal antibody (STJ29920) at dilution of 1:100 (40x lens). Blue: DAPI for nuclear staining.

Immunofluorescence analysis of NIH/3T3 cells using VEGFA rabbit polyclonal antibody (STJ29920) at dilution of 1:100 (40x lens). Blue: DAPI for nuclear staining.

This product is suitable for in-vitro studies under the RESEARCH USE ONLY [RUO] licence. This product must not be used as for diagnostic or other medical purposes.  
St John's Laboratory Ltd, Knowledge Dock Business Centre, University Way, London, E16 2RD | Tel: 0208 223 3081