

Anti-SNAI1 antibody (200-267) (STJ29909)

STJ29909

GENERAL INFORMATION

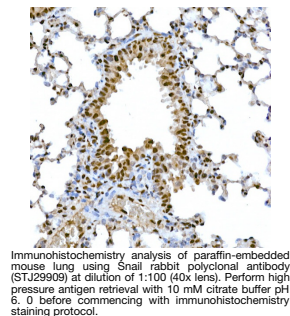
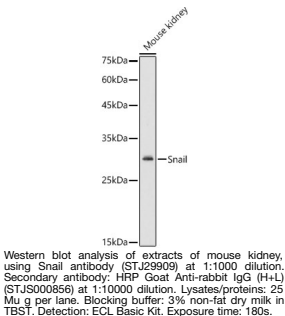
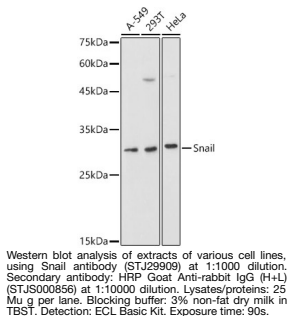
Product Type	Primary antibodies
Short Description	
Applications	WB/IHC-P/IF/ICC/ELISA
Host/Source	Rabbit
Reactivity	Human/Mouse/Rat

PRODUCT PROPERTIES

Clonality	Polyclonal
Clone ID	
Concentration	Lot specific
Conjugation	Unconjugated
Purification	Affinity purification
Dilution Range	WB:1:500-1:1000 IHC-P:1:50-1:200 IF/ICC:1:50-1:200 ELISA:Recommended starting concentration is 1 µg/mL. Please optimize the concentration based on your specific assay requirements.
Formulation	PBS with 0.01% Thimerosal, 50% Glycerol, pH 7.3.
Isotype	IgG
Storage Instruction	Store at -20°C for up to 1 year from the date of receipt, and avoid repeat freeze-thaw cycles.

TARGET INFORMATION

Gene ID	6615
Gene Symbol	SNAI1
Uniprot ID	SNAI1_HUMAN
Immunogen	
Immunogen Region	200-267
Specificity	A synthetic peptide corresponding to a sequence within amino acids 200-267 of human SNAI1 (NP_005976.2).
Immunogen Sequence	RTHTGEKPFSCPHCSRAFAD RSNLRAHLQTHSDVKYQCQ ACARTFSRMSLLHKHQESGC SGCPR



This product is suitable for in-vitro studies under the RESEARCH USE ONLY [RUO] licence. This product must not be used as for diagnostic or other medical purposes.
St John's Laboratory Ltd, Knowledge Dock Business Centre, University Way, London, E16 2RD | Tel: 0208 223 3081