

Anti-CSPG4 antibody (1340-1563) (STJ29905)
STJ29905

GENERAL INFORMATION

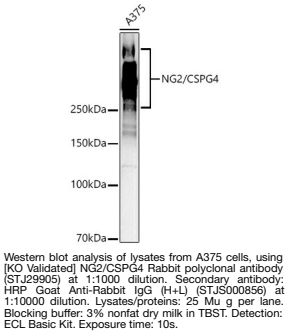
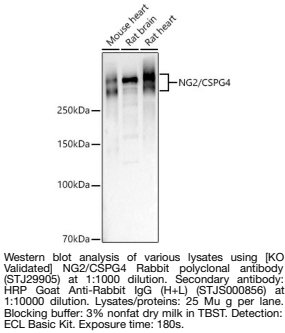
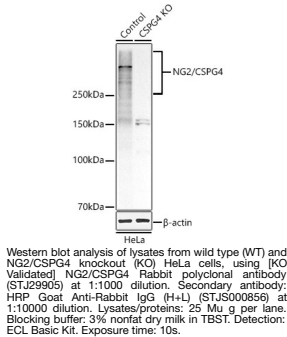
Product Type	Primary antibodies
Short Description	
Applications	WB/IHC-P/IF/ICC/ELISA
Host/Source	Rabbit
Reactivity	Human/Mouse/Rat

PRODUCT PROPERTIES

Clonality	Polyclonal
Clone ID	
Concentration	Lot specific
Conjugation	Unconjugated
Purification	Affinity purification
Dilution	WB:1:500-1:1000
Range	IHC-P:1:50-1:200 IF/ICC:1:50-1:200 ELISA:Recommended starting concentration is 1 Mu g/mL. Please optimize the concentration based on your specific assay requirements.
Formulation	PBS with 0.05% Proclin300, 50% Glycerol, pH 7.3.
Isotype	IgG
Storage	Store at-20°C for up to 1 year from the date of receipt, and avoid repeat freeze-thaw cycles.
Instruction	

TARGET INFORMATION

Gene ID	1464
Gene Symbol	CSPG4
Uniprot ID	CSPG4_HUMAN
Immunogen	1340-1563
Region	
Specificity	Recombinant fusion protein containing a sequence corresponding to amino acids 1340-1563 of human NG2/CSPG4 (NP_001888.2).
Immunogen Sequence	LGAPLEGVLVEVLPAAP LEAQNFVPEGGSLTAPPL LRVSGPYFPTLLGLSLQVLE PPQHGALQKEDGPQARTLSA FSWRMVEEQILIRYVHDGSET LTDSFVLMANASEMDRQSHP VAFTVTLPVNDQPPILTTN TGLQMWEGATAPIPAEALRS TDGDSGSEDLVYTIQPSNG RVLRLGAPGTEVRSFTQAQL DGGLVLFSHRGTLDGGFRFR LSDG



This product is suitable for in-vitro studies under the RESEARCH USE ONLY [RUO] licence. This product must not be used as for diagnostic or other medical purposes.
St John's Laboratory Ltd, Knowledge Dock Business Centre, University Way, London, E16 2RD | Tel: 0208 223 3081