

Anti-SMO antibody (28-787) (STJ29901)

STJ29901

GENERAL INFORMATION

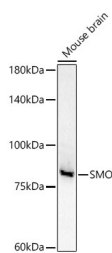
Product Type	Primary antibodies
Short Description	
Applications	WB/ELISA
Host/Source	Rabbit
Reactivity	Human/Mouse

PRODUCT PROPERTIES

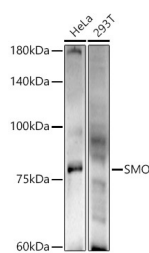
Clonality	Polyclonal
Clone ID	
Concentration	Lot specific
Conjugation	Unconjugated
Purification	Affinity purification
Dilution	WB:1:100-1:500
Range	ELISA:Recommended starting concentration is 1 Mu g/mL. Please optimize the concentration based on your specific assay requirements.
Formulation	PBS with 0.05% Proclin300, 50% Glycerol, pH 7.3.
Isotype	IgG
Storage	Store at-20°C for up to 1 year from the date of receipt, and avoid repeat freeze-thaw cycles.
Instruction	

TARGET INFORMATION

Gene ID	6608
Gene Symbol	SMO
Uniprot ID	SMO_HUMAN
Immunogen	
Immunogen Region	28-787
Specificity	Recombinant fusion protein containing a sequence corresponding to amino acids 28-233 of human SMO (NP_005622.1).
Immunogen Sequence	RGAASSGNATGPGPRGAGGS ARRSAAVTGPPPLSHCGRA APCEPLRYNVCLGSVLPYGA TSTLLAGDSDSQEEAHGKLV LWSGLRNAPRCWAVIQPLL AVYMPKCENDRVLPSTLC QATRGPCAIVERERGWPDFL RCTPDRFPEGCTNEVQNIKF NSSGQCEVPLVRTDNPKSWY EDVEGCGIQCQNPLFTEAEH QDMHSY



Western blot analysis of extracts of Mouse brain, using SMO antibody (STJ29901) at 1:500 dilution. Secondary antibody: HRP Goat Anti-Rabbit IgG (H+L) (STJS000856) at 1:10000 dilution. Lysates/proteins: 25 Mu g per lane. Blocking buffer: 3% nonfat dry milk in TBST. Detection: ECL Basic Kit. Exposure time: 180s.



Western blot analysis of extracts of various cell lines, using SMO antibody (STJ29901) at 1:500 dilution. Secondary antibody: HRP Goat Anti-Rabbit IgG (H+L) (STJS000856) at 1:10000 dilution. Lysates/proteins: 25 Mu g per lane. Blocking buffer: 3% nonfat dry milk in TBST. Detection: ECL Enhanced Kit. Exposure time: 120s.

This product is suitable for in-vitro studies under the RESEARCH USE ONLY [RUO] licence. This product must not be used as for diagnostic or other medical purposes.
St John's Laboratory Ltd, Knowledge Dock Business Centre, University Way, London, E16 2RD | Tel: 0208 223 3081