

Anti-XBP1 antibody (277-376) (STJ29865)

STJ29865

GENERAL INFORMATION

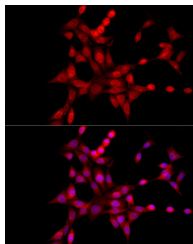
Product Type	Primary antibodies
Short Description	
Applications	WB/IF/ICC/ELISA
Host/Source	Rabbit
Reactivity	Human/Mouse/Rat

PRODUCT PROPERTIES

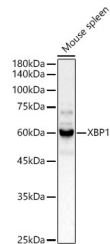
Clonality	Polyclonal
Clone ID	
Concentration	Lot specific
Conjugation	Unconjugated
Purification	Affinity purification
Dilution Range	WB:1:500-1:2000 IF/ICC:1:50-1:200 ELISA:Recommended starting concentration is 1 Mu g/mL. Please optimize the concentration based on your specific assay requirements.
Formulation	PBS with 0.02% Sodium Azide, 50% Glycerol, pH 7.3.
Isotype	IgG
Storage Instruction	Store at -20°C for up to 1 year from the date of receipt, and avoid repeat freeze-thaw cycles.

TARGET INFORMATION

Gene ID	7494
Gene Symbol	XBP1
Uniprot ID	XBP1_HUMAN
Immunogen	
Immunogen Region	277-376
Specificity	A synthetic peptide corresponding to a sequence within amino acids 277-376 of human XBP1 (NP_005071.2).
Immunogen Sequence	NVVVKIEEAPLSPSENDHPE FIVSVKEEPVEDDLVPELGI SNLLSSSHCPKPSSCLLDAY SDCGYGGSLSPFSDMSSLLG VNHSWEDTFANELFPQLISV



Immunofluorescence analysis of NIH/3T3 cells using XBP1 Rabbit polyclonal antibody (STJ29865) at dilution of 1:100 (40x lens). Secondary antibody: Cy3 Goat Anti-Rabbit IgG (H+L) at 1:500 dilution. Blue: DAPI for nuclear staining.



Western blot analysis of lysates from Mouse spleen, using XBP1 Rabbit polyclonal antibody (STJ29865) at 1:1000 dilution. Secondary antibody: HRP Goat Anti-Rabbit IgG (H+L) (STJS000856) at 1:10000 dilution. Lysates/proteins: 25ug per lane. Blocking buffer: 3% nonfat dry milk in TBST. Detection: ECL Basic Kit. Exposure time: 90s.