

Anti-F13A1 antibody (600-732) (STJ29855)

STJ29855

GENERAL INFORMATION

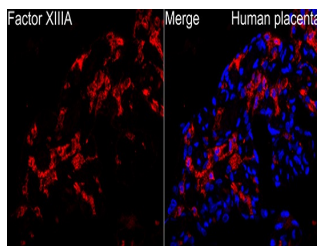
Product Type	Primary antibodies
Short Description	
Applications	WB/IF/ICC/ELISA
Host/Source	Rabbit
Reactivity	Human/Mouse/Rat

PRODUCT PROPERTIES

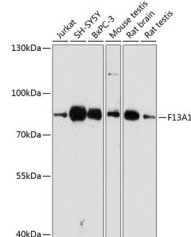
Clonality	Polyclonal
Clone ID	
Concentration	Lot specific
Conjugation	Unconjugated
Purification	Affinity purification
Dilution Range	WB:1:1000-1:5000 IF/ICC:1:500-1:1000 ELISA:Recommended starting concentration is 1 µg/mL. Please optimize the concentration based on your specific assay requirements.
Formulation	PBS with 0.05% Proclin300, 50% Glycerol, pH 7.3.
Isotype	IgG
Storage Instruction	Store at -20°C for up to 1 year from the date of receipt, and avoid repeat freeze-thaw cycles.

TARGET INFORMATION

Gene ID	2162
Gene Symbol	F13A1
Uniprot ID	F13A_HUMAN
Immunogen	
Immunogen Region	600-732
Specificity	Recombinant fusion protein containing a sequence corresponding to amino acids 600-732 of human F13A1 (NP_000120.2).
Immunogen Sequence	LEQASLHFFVTARINETRDV LAKQKSTVLTPEIIKVRG TQVVGSDMTVTVEFTNPLKE TLRNWWVHLDGPGVTRPMKK MFREIRPNSTVQWEEVCRPW VSGHRKLIASMSSDSL RHVY GELDVQIQRRPSM



Immunofluorescence analysis of human placenta using Anti-F13A1 Rabbit polyclonal antibody (STJ29855) at a dilution of 1:800 (40x lens). Secondary antibody: Cy3 Goat Anti-Rabbit IgG (H+L) at 1:500 dilution. Blue: DAPI for nuclear staining. Perform high pressure antigen retrieval with 0.01 M citrate buffer (pH 6.0) prior to IF staining.



Western blot analysis of various lysates using Anti-F13A1 Rabbit polyclonal antibody (STJ29855) at 1:3000 dilution. Secondary antibody: HRP Goat Anti-Rabbit IgG (H+L) (STJ500856) at 1:10000 dilution. Lysates/proteins: 25 µg per lane. Blocking buffer: 3% nonfat dry milk in TBST. Detection: ECL Basic Kit. Exposure time: 90s.

This product is suitable for in-vitro studies under the RESEARCH USE ONLY [RUO] licence. This product must not be used as for diagnostic or other medical purposes.
St John's Laboratory Ltd, Knowledge Dock Business Centre, University Way, London, E16 2RD | Tel: 0208 223 3081