

Anti-SELP antibody (30-200) (STJ29851)

STJ29851

GENERAL INFORMATION

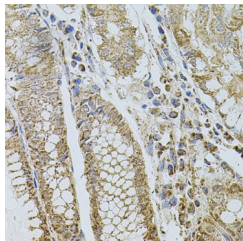
Product Type	Primary antibodies
Short Description	
Applications	WB/IHC-P/ELISA
Host/Source	Rabbit
Reactivity	Human/Rat

PRODUCT PROPERTIES

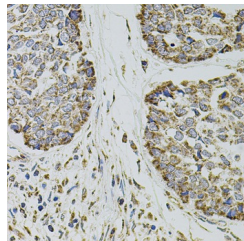
Clonality	Polyclonal
Clone ID	
Concentration	Lot specific
Conjugation	Unconjugated
Purification	Affinity purification
Dilution	WB:1:500-1:2000
Range	IHC-P:1:50-1:200
	ELISA:Recommended starting concentration is 1 Mu g/mL. Please optimize the concentration based on your specific assay requirements.
Formulation	PBS with 0.02% Sodium Azide, 50% Glycerol, pH 7.3.
Isotype	IgG
Storage Instruction	Store at -20°C for up to 1 year from the date of receipt, and avoid repeat freeze-thaw cycles.

TARGET INFORMATION

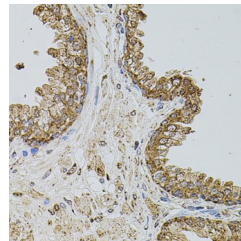
Gene ID	6403
Gene Symbol	SELP
Uniprot ID	LYAM3_HUMAN
Immunogen	
Immunogen Region	30-200
Specificity	Recombinant fusion protein containing a sequence corresponding to amino acids 30-200 of human CD62P/P-selectin (NP_002996.2).
Immunogen Sequence	ISELTNQKEVAAWTYHYSTK AYSWNISRKYCQNRITDLVA IQNKNEIDYLNKVLPPYSSY YWIGIRKNNKTWTWVGTKKA LTNEAENWADNEPNNKRNE DCVEIYIKSPSAPGKWNDDEH CLKKKHALCYTASCQDMSCS KQGECLETIGNYTCSYPGF YGPCEYVREC



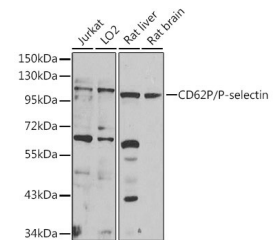
Immunohistochemistry analysis of paraffin-embedded human stomach using CD62P/P-selectin antibody (STJ29851) at dilution of 1:100 (40x lens). Perform microwave antigen retrieval with 10 mM PBS buffer pH 7.2 before commencing with immunohistochemistry staining protocol.



Immunohistochemistry analysis of paraffin-embedded human esophageal cancer using CD62P/P-selectin antibody (STJ29851) at dilution of 1:100 (40x lens). Perform microwave antigen retrieval with 10 mM PBS buffer pH 7.2 before commencing with immunohistochemistry staining protocol.



Immunohistochemistry analysis of paraffin-embedded human prostate using CD62P/P-selectin antibody (STJ29851) at dilution of 1:100 (40x lens). Perform microwave antigen retrieval with 10 mM PBS buffer pH 7.2 before commencing with immunohistochemistry staining protocol.



Western blot analysis of extracts of various cell lines, using CD62P/P-selectin antibody (STJ29851) at 1:1000 dilution. Secondary antibody: HRP Goat Anti-Rabbit IgG (H+L) (STJ5000856) at 1:10000 dilution. Lysates/proteins: 25 Mu g per lane. Blocking buffer: 3% nonfat dry milk in TBST. Detection: ECL Enhanced Kit. Exposure time: 10s.

This product is suitable for in-vitro studies under the RESEARCH USE ONLY [RUO] licence. This product must not be used as for diagnostic or other medical purposes.

St John's Laboratory Ltd, Knowledge Dock Business Centre, University Way, London, E16 2RD | Tel: 0208 223 3081