

Anti-CDC42 antibody (118-191) (STJ29840)
STJ29840

GENERAL INFORMATION

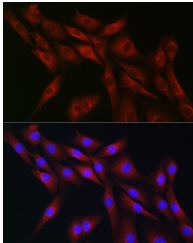
Product Type	Primary antibodies
Short Description	
Applications	WB/IHC-P/IF/ICC/ELISA
Host/Source	Rabbit
Reactivity	Human/Mouse/Rat

PRODUCT PROPERTIES

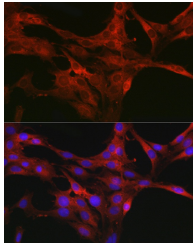
Clonality	Polyclonal
Clone ID	
Concentration	Lot specific
Conjugation	Unconjugated
Purification	Affinity purification
Dilution Range	WB:1:500-1:1000 IHC-P:1:50-1:200 IF/ICC:1:50-1:200 ELISA:Recommended starting concentration is 1 µg/mL. Please optimize the concentration based on your specific assay requirements.
Formulation	PBS with 0.09% Sodium Azide, 50% Glycerol, pH 7.3.
Isotype	IgG
Storage Instruction	Store at -20°C for up to 1 year from the date of receipt, and avoid repeat freeze-thaw cycles.

TARGET INFORMATION

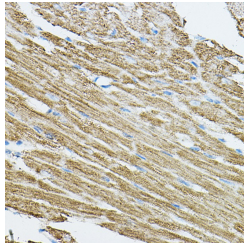
Gene ID	998
Gene Symbol	CDC42
Uniprot ID	CDC42_HUMAN
Immunogen	
Immunogen Region	118-191
Specificity	Recombinant fusion protein containing a sequence corresponding to amino acids 118-191 of human CDC42 (NP_001782.1).
Immunogen Sequence	DLRDDPSTIEKLAKNKQKPI TPETAEKLRDLKAVKYVEC SALTQKGLKNVFDEAILAAL EPPEPKSRRCVLL



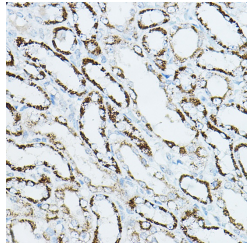
Immunofluorescence analysis of NIH-3T3 cells using CDC42 Rabbit polyclonal antibody (STJ29840) at dilution of 1:50 (40x lens). Blue: DAPI for nuclear staining.



Immunofluorescence analysis of C6 cells using CDC42 Rabbit polyclonal antibody (STJ29840) at dilution of 1:50 (40x lens). Blue: DAPI for nuclear staining.



Immunohistochemistry analysis of paraffin-embedded mouse heart using CDC42 Rabbit polyclonal antibody (STJ29840) at dilution of 1:50 (40x lens). Perform high pressure antigen retrieval with 10 mM citrate buffer pH 6, 0 before commencing with immunohistochemistry staining protocol.



Immunohistochemistry analysis of paraffin-embedded rat kidney using CDC42 Rabbit polyclonal antibody (STJ29840) at dilution of 1:50 (40x lens). Perform high pressure antigen retrieval with 10 mM citrate buffer pH 6, 0 before commencing with immunohistochemistry staining protocol.