

Anti-NSF antibody (251-400) (STJ29825)

STJ29825

GENERAL INFORMATION

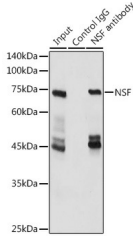
Product Type	Primary antibodies
Short Description	
Applications	WB/IF/ICC/IP/ELISA
Host/Source	Rabbit
Reactivity	Human/Mouse/Rat

PRODUCT PROPERTIES

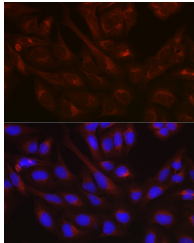
Clonality	Polyclonal
Clone ID	
Concentration	Lot specific
Conjugation	Unconjugated
Purification	Affinity purification
Dilution	WB:1:1000-1:5000
Range	IF/CC:1:50-1:200
	IP:0.5 Mu g-4 Mu g antibody for 400 Mu g-600 Mu g extracts of whole cells
	ELISA:Recommended starting concentration is 1 Mu g/mL. Please optimize the concentration based on your specific assay requirement
Formulation	PBS with 0.09% Sodium Azide, 50% Glycerol, pH 7.3.
Isotype	IgG
Storage	Store at-20°C for up to 1 year from the date of receipt, and avoid repeat freeze-thaw cycles.
Instruction	

TARGET INFORMATION

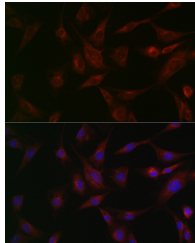
Gene ID	4905
Gene Symbol	NSF
Uniprot ID	NSF_HUMAN
Immunogen	
Region	251-400
Specificity	Recombinant fusion protein containing a sequence corresponding to amino acids 251-400 of human NSF (NP_006169.2).
Immunogen Sequence	KHVKGILLYGPPGCGKTLA RQIGKMLNAREPKVVGPEI LNKYVGESANIRKLFADAE EEQRRLGANSGLHIIIFDEI DAICKQRGSMAGSTGVHDTV VNQLLSKIDGVEQLNLIIV GMTNRPDLIDEALLRPGRL VKMEIGLPDE



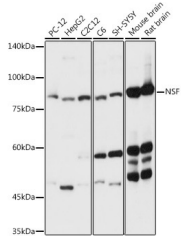
Immunoprecipitation analysis of 600 Mu g extracts of Mouse brain cells using 3 Mu g NSF antibody (STJ29825). Western blot was performed from the immunoprecipitate using NSF antibody (STJ29825) at a dilution of 1:3000.



Immunofluorescence analysis of U-2 OS cells using NSF Rabbit polyclonal antibody (STJ29825) at dilution of 1:100 (40x lens). Secondary antibody: Cy3 Goat Anti-Rabbit IgG (H+L) at 1:500 dilution. Blue: DAPI for nuclear staining.



Immunofluorescence analysis of BALB-3T3 cells using NSF Rabbit polyclonal antibody (STJ29825) at dilution of 1:100 (40x lens). Secondary antibody: Cy3 Goat Anti-Rabbit IgG (H+L) at 1:500 dilution. Blue: DAPI for nuclear staining.



Western blot analysis of various lysates using NSF Rabbit polyclonal antibody (STJ29825) at 1:3000 dilution. Secondary antibody: HRP Goat Anti-Rabbit IgG (H+L) (STJ5000856) at 1:10000 dilution. Lysates/proteins: 25 Mu g per lane. Blocking buffer: 3% nonfat dry milk in TBST. Detection: ECL Basic Kit. Exposure time: 1s.

This product is suitable for in-vitro studies under the RESEARCH USE ONLY [RUO] licence. This product must not be used as for diagnostic or other medical purposes.
St John's Laboratory Ltd, Knowledge Dock Business Centre, University Way, London, E16 2RD | Tel: 0208 223 3081