

Anti-EPAS1 antibody (678-745) (STJ29691)

STJ29691

GENERAL INFORMATION

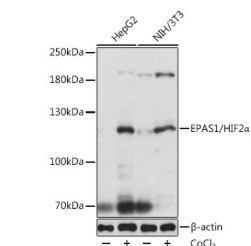
Product Type	Primary antibodies
Short Description	
Applications	WB/IHC-P/IF/ICC/ELISA
Host/Source	Rabbit
Reactivity	Human/Mouse/Rat

PRODUCT PROPERTIES

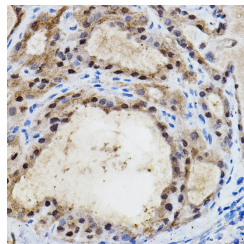
Clonality	Polyclonal
Clone ID	
Concentration	Lot specific
Conjugation	Unconjugated
Purification	Affinity purification
Dilution Range	WB:1:500-1:2000 IHC-P:1:50-1:200 IF/ICC:1:50-1:200 ELISA:Recommended starting concentration is 1 µg/mL. Please optimize the concentration based on your specific assay requirements.
Formulation	PBS with 0.09% Sodium Azide, 50% Glycerol, pH 7.3.
Isotype	IgG
Storage Instruction	Store at -20°C for up to 1 year from the date of receipt, and avoid repeat freeze-thaw cycles.

TARGET INFORMATION

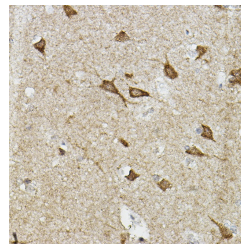
Gene ID	2034
Gene Symbol	EPAS1
Uniprot ID	EPAS1_HUMAN
Immunogen	
Immunogen Region	678-745
Specificity	Recombinant fusion protein containing a sequence corresponding to amino acids 678-745 of human EPAS1/HIF2 Alpha (NP_001421.2).
Immunogen Sequence	TFKTRSAKGFARGPDVLSP AMVALSNKLKLRQLEYEEQ AFQDLGGDPPGGSTSHLMW KRMKNLRG



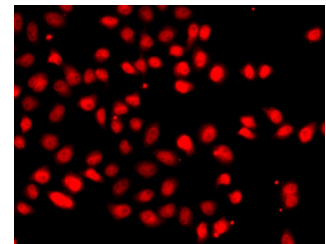
Western blot analysis of extracts of various cell lines, using EPAS1/HIF2 Alpha antibody (STJ29691) at 1:1000 dilution. Secondary antibody: HRP Goat Anti-rabbit IgG (H+L) at 1:10000 dilution. Lysates/proteins: 25µg per lane. Blocking buffer: 3% nonfat dry milk in TBST. Detection: ECL Basic Kit. Exposure time: 1s.



Immunohistochemistry of paraffin-embedded human thyroid cancer using EPAS1/HIF2 Alpha rabbit polyclonal antibody (STJ29691) at dilution of 1:100 (40x lens).



Immunohistochemistry of paraffin-embedded human brain using EPAS1/HIF2 Alpha rabbit polyclonal antibody (STJ29691) at dilution of 1:100 (40x lens).



Immunofluorescence analysis of A549 cells using EPAS1/HIF2 Alpha antibody (STJ29691).

This product is suitable for in-vitro studies under the RESEARCH USE ONLY [RUO] licence. This product must not be used as for diagnostic or other medical purposes.
St John's Laboratory Ltd, Knowledge Dock Business Centre, University Way, London, E16 2RD | Tel: 0208 223 3081