

Anti-DVL2 antibody (600-736) (STJ29689)

STJ29689

GENERAL INFORMATION

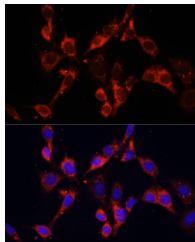
Product Type	Primary antibodies
Short Description	
Applications	IF/ICC/ELISA
Host/Source	Rabbit
Reactivity	Mouse

PRODUCT PROPERTIES

Clonality	Polyclonal
Clone ID	
Concentration	Lot specific
Conjugation	Unconjugated
Purification	Affinity purification
Dilution Range	IF/ICC:1:50-1:200 ELISA:Recommended starting concentration is 1 µg/mL. Please optimize the concentration based on your specific assay requirements.
Formulation	PBS with 0.02% Sodium Azide, 50% Glycerol, pH 7.3.
Isotype	IgG
Storage	Store at -20°C for up to 1 year from the date of receipt, and avoid repeat freeze-thaw cycles.
Instruction	

TARGET INFORMATION

Gene ID	1856
Gene Symbol	DVL2
Uniprot ID	DVL2_HUMAN
Immunogen	
Immunogen Region	600-736
Specificity	Recombinant fusion protein containing a sequence corresponding to amino acids 600-700 of human DVL2 (NP_004413.1).
Immunogen Sequence	GAGRTGRPEERAPESKSGSG SESEPSRRGGSLRRGGEASG TSDGGPPPSRGSTGGAPNLR AHPGLHPYGGPPGMALPYNP MMVVMPPPPPPVPPAVQPP G



Immunofluorescence analysis of NIH/3T3 cells using DVL2 antibody (STJ29689) at dilution of 1:100. Blue: DAPI for nuclear staining.

This product is suitable for in-vitro studies under the RESEARCH USE ONLY [RUO] licence. This product must not be used as for diagnostic or other medical purposes.
St John's Laboratory Ltd, Knowledge Dock Business Centre, University Way, London, E16 2RD | Tel: 0208 223 3081