

Anti-ALDH1A2 antibody (1-180) (STJ29639)
STJ29639

GENERAL INFORMATION

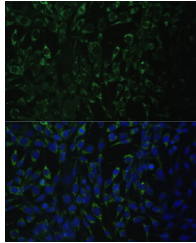
Product Type	Primary antibodies
Short Description	
Applications	WB/IHC-P/IF/ICC/ELISA
Host/Source	Rabbit
Reactivity	Human/Mouse/Rat

PRODUCT PROPERTIES

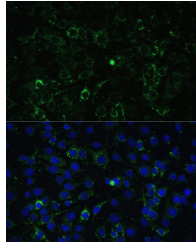
Clonality	Polyclonal
Clone ID	
Concentration	Lot specific
Conjugation	Unconjugated
Purification	Affinity purification
Dilution	WB:1:500-1:2000
Range	IHC-P:1:50-1:200 IF/ICC:1:50-1:200 ELISA:Recommended starting concentration is 1 μ g/mL. Please optimize the concentration based on your specific assay requirements.
Formulation	PBS with 0.02% Sodium Azide, 50% Glycerol, pH 7.3.
Isotype	IgG
Storage	Store at -20°C for up to 1 year from the date of receipt, and avoid repeat freeze-thaw cycles.
Instruction	

TARGET INFORMATION

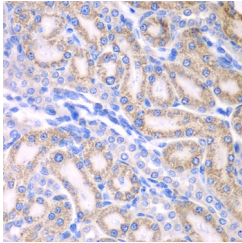
Gene ID	8854
Gene Symbol	ALDH1A2
Uniprot ID	AL1A2_HUMAN
Immunogen	
Region	1-180
Specificity	Recombinant fusion protein containing a sequence corresponding to amino acids 1-180 of human ALDH1A2 (NP_733797.1).
Immunogen	MTSSKIEMPGEVKADPAALM ASLHLLPSPTPNLEIKYTKI FINNEWQNSESGRVFPVYNP ATGEQVCEVQEADKADIDKA
Sequence	VQAARLAFSLGSLVWRRMDAS ERGLLDKLDLVERDRAVL ATMESLNGGKPFLLQAFYVDL QGVIKTFRRYAGWADKIHGM TIPVDGDDYFTTRHEPIGVC



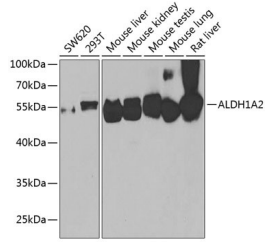
Immunofluorescence analysis of NIH-3T3 cells using ALDH1A2 antibody (STJ29639) at dilution of 1:100. Blue: DAPI for nuclear staining.



Immunofluorescence analysis of C6 cells using ALDH1A2 antibody (STJ29639) at dilution of 1:100. Blue: DAPI for nuclear staining.



Immunohistochemistry analysis of paraffin-embedded rat kidney using ALDH1A2 antibody (STJ29639) at dilution of 1:100 (40x lens). Perform microwave antigen retrieval with 10 mM PBS buffer pH 7.2 before commencing with immunohistochemistry staining protocol.



Western blot analysis of extracts of various cell lines, using ALDH1A2 antibody (STJ29639) at 1:1000 dilution. Secondary antibody: HRP Goat Anti-Rabbit IgG (H+L) (STJ5000856) at 1:10000 dilution. Lysates/proteins: 25 μ g per lane. Blocking buffer: 3% nonfat dry milk in TBST. Detection: ECL Basic Kit. Exposure time: 90s.

This product is suitable for in-vitro studies under the RESEARCH USE ONLY [RUO] licence. This product must not be used as for diagnostic or other medical purposes.
St John's Laboratory Ltd, Knowledge Dock Business Centre, University Way, London, E16 2RD | Tel: 0208 223 3081