

Anti-PPP3R2 antibody (1-173) (STJ29631)

STJ29631

GENERAL INFORMATION

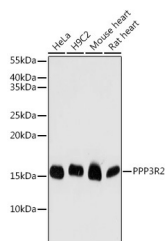
Product Type	Primary antibodies
Short Description	
Applications	WB/ELISA
Host/Source	Rabbit
Reactivity	Human/Mouse/Rat

PRODUCT PROPERTIES

Clonality	Polyclonal
Clone ID	
Concentration	Lot specific
Conjugation	Unconjugated
Purification	Affinity purification
Dilution	WB: 1:500-1:2000
Range	ELISA: Recommended starting concentration is 1 µg/mL. Please optimize the concentration based on your specific assay requirements.
Formulation	PBS with 0.02% Sodium Azide, 50% Glycerol, pH 7.3.
Isotype	IgG
Storage	Store at -20°C for up to 1 year from the date of receipt, and avoid repeat freeze-thaw cycles.
Instruction	

TARGET INFORMATION

Gene ID	5535
Gene Symbol	PPP3R2
Uniprot ID	CANB2_HUMAN
Immunogen	
Immunogen Region	1-173
Specificity	Recombinant fusion protein containing a sequence corresponding to amino acids 1-173 of human PPP3R2 (NP_671709.1).
Immunogen Sequence	MSTMGNESYPAEMCSHFDN DEIKRLGRRFKKLDLDKSGS LSVEEFMSPLELRHNPVRR VIDVFDTGDGEVDFKEFIL GTSQFSVKGDEEQKLRFAFS IYMDKDGYSINGELFQVLK MMVGNLTDWQLQQLVDKTI IILDKDGDGKISFEESAVV RDLIHKKLVLIV



Western blot analysis of extracts of various cell lines, using PPP3R2 antibody (STJ29631) at 1:1000 dilution. Secondary antibody: HRP Goat Anti-Rabbit IgG (H+L) (STJ5000856) at 1:10000 dilution. Lysates/proteins: 25 µg per lane. Blocking buffer: 3% nonfat dry milk in TBST. Detection: ECL Basic Kit. Exposure time: 180s.

This product is suitable for in-vitro studies under the RESEARCH USE ONLY [RUO] licence. This product must not be used as for diagnostic or other medical purposes.
St John's Laboratory Ltd, Knowledge Dock Business Centre, University Way, London, E16 2RD | Tel: 0208 223 3081