

Anti-SPAG16 antibody (1-183) (STJ29618)

STJ29618

GENERAL INFORMATION

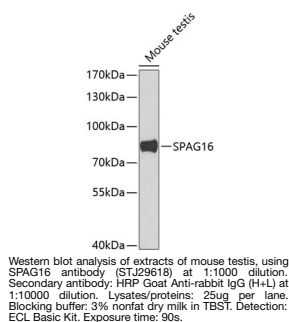
Product Type	Primary antibodies
Short Description	
Applications	WB/ELISA
Host/Source	Rabbit
Reactivity	Human/Mouse/Rat

PRODUCT PROPERTIES

Clonality	Polyclonal
Clone ID	
Concentration	Lot specific
Conjugation	Unconjugated
Purification	Affinity purification
Dilution	WB:1:500-1:2000
Range	ELISA:Recommended starting concentration is 1 µg/mL. Please optimize the concentration based on your specific assay requirements.
Formulation	PBS with 0.02% Sodium Azide, 50% Glycerol, pH 7.3.
Isotype	IgG
Storage	Store at -20°C for up to 1 year from the date of receipt, and avoid repeat freeze-thaw cycles.
Instruction	

TARGET INFORMATION

Gene ID	79582
Gene Symbol	SPAG16
Uniprot ID	SPG16_HUMAN
Immunogen	
Immunogen Region	1-183
Specificity	Recombinant fusion protein containing a sequence corresponding to amino acids 1-183 of human SPAG16 (NP_001020607.1).
Immunogen Sequence	MAAQRGMPPSSAVRVLEEALG MGLTAAGDARDTADAVAAEG AYYLEQVTITEASEDDYEYE EIPDDNFSIPEGEEDLAKAI QMAQEQTATDEILERKTVLP SKHAVPEVIEDFLCNFLIKM GMTRTLDCFQSEWYELIQKG VTELRTVGNVPDVYTQIMLL ENENKNLKKDLKHYKQAAEY VIF



This product is suitable for in-vitro studies under the RESEARCH USE ONLY [RUO] licence. This product must not be used as for diagnostic or other medical purposes.
St John's Laboratory Ltd, Knowledge Dock Business Centre, University Way, London, E16 2RD | Tel: 0208 223 3081