

**Anti-ASPC1 antibody (284-553) (STJ29617)**  
STJ29617

**GENERAL INFORMATION**

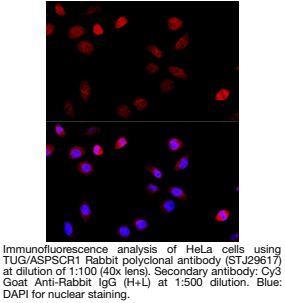
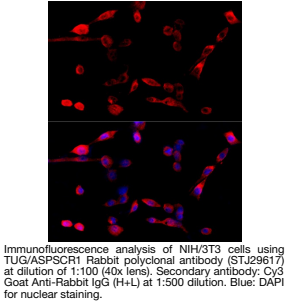
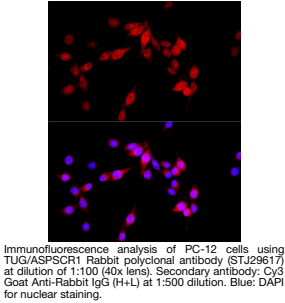
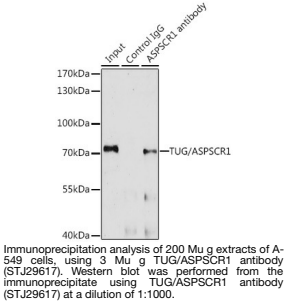
<b>Product Type</b>	Primary antibodies
<b>Short Description</b>	
<b>Applications</b>	WB/IF/ICC/IP/ELISA
<b>Host/Source</b>	Rabbit
<b>Reactivity</b>	Human/Mouse/Rat

**PRODUCT PROPERTIES**

<b>Clonality</b>	Polyclonal
<b>Clone ID</b>	
<b>Concentration</b>	Lot specific
<b>Conjugation</b>	Unconjugated
<b>Purification</b>	Affinity purification
<b>Dilution Range</b>	WB: 1:500-1:2000 IF/CC: 1:50-1:200
<b>Formulation</b>	IP: 0.5 µg-4 µg antibody for 200 µg-400 µg extracts of whole cells ELISA: Recommended starting concentration is 1 µg/mL. Please optimize the concentration based on your specific assay requirements
<b>Isotype</b>	IgG
<b>Storage</b>	PBS with 0.02% Sodium Azide, 50% Glycerol, pH 7.3.
<b>Instruction</b>	Store at -20°C for up to 1 year from the date of receipt, and avoid repeat freeze-thaw cycles.

**TARGET INFORMATION**

<b>Gene ID</b>	79058
<b>Gene Symbol</b>	ASPC1
<b>Uniprot ID</b>	ASPC1_HUMAN
<b>Immunogen</b>	
<b>Region</b>	284-553
<b>Specificity</b>	Recombinant fusion protein containing a sequence corresponding to amino acids 284-553 of human TUG/ASPC1 (NP_076988.1).
<b>Immunogen Sequence</b>	KSKSGQDPQQEQEQERERDP QQEQERERPVDREPVDREP VCHPDLEERLQAWPAELPDE FFELTVDDVRRRLAQLKSER KRLAEAPLVTKAFREAQIKE KLERYPKVALRVLPDRYVL QGFFRPSETVGDLRDFVRSH LGNPELSFYLFITPPKTVLD DHTQTFLQANLFPAALVHLG AEPPAGVYLEPGLLEHAISP SAADVLVARYMSRAAGSPSP LPAPDPAPKSEPAEEGAL



This product is suitable for in-vitro studies under the RESEARCH USE ONLY [RUO] licence. This product must not be used as for diagnostic or other medical purposes.  
St John's Laboratory Ltd, Knowledge Dock Business Centre, University Way, London, E16 2RD | Tel: 0208 223 3081