

Anti-GSDME antibody (271-496) (STJ29568)
STJ29568

GENERAL INFORMATION

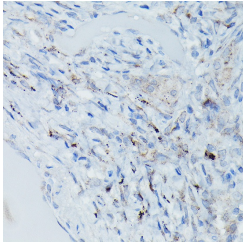
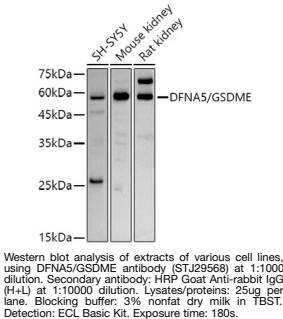
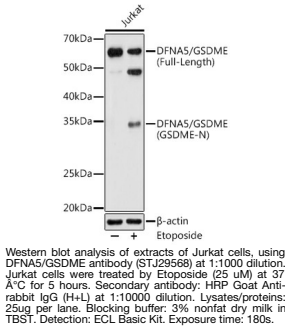
Product Type	Primary antibodies
Short Description	
Applications	WB/IHC-P/IF/ICC/ELISA
Host/Source	Rabbit
Reactivity	Human/Mouse/Rat

PRODUCT PROPERTIES

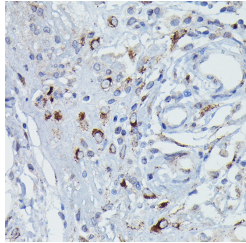
Clonality	Polyclonal
Clone ID	
Concentration	Lot specific
Conjugation	Unconjugated
Purification	Affinity purification
Dilution Range	WB:1:500-1:1000 IHC-P:1:50-1:200 IF/ICC:1:50-1:100 ELISA:Recommended starting concentration is 1 μ g/mL. Please optimize the concentration based on your specific assay requirements.
Formulation	PBS with 0.09% Sodium Azide, 50% Glycerol, pH 7.3.
Isotype	IgG
Storage	Store at -20°C for up to 1 year from the date of receipt, and avoid repeat freeze-thaw cycles.
Instruction	

TARGET INFORMATION

Gene ID	1687
Gene Symbol	GSDME
Uniprot ID	GSDME_HUMAN
Immunogen	
Immunogen Region	271-496
Specificity	A synthetic peptide corresponding to a sequence within amino acids 1-270 of human GSDME (NP_004394.1).
Immunogen Sequence	MFAKATRNFLREVDADGDLI AVSNLNDSKQLQLSLVTKK KRFWCWQRPKYQFLSLTLGD VLIEDQFPSPVWVESDFVKY EGKFANHVSGTLETALGKVK LNLGGSSRVESQSSFGTLRK QEVDLQQLIRDSAERTINLR NPVLQQVLEGRNEVLCVLTQ KITTMQKCVISEHMQVEEKC GGIVGIQTKTVQVSATEDGN VTKDSNVVLEIPAATTIAYG VIELVYKLDGQFEFCLLRG



Immunohistochemistry of paraffin-embedded Human pulmonary tuberculosis using DFNA5/GSDME rabbit polyclonal antibody (STJ29568) at dilution of 1:50 (40x lens). Perform high pressure antigen retrieval with 10 mM citrate buffer pH 6.0 before commencing with immunohistochemistry staining protocol.



Immunohistochemistry of paraffin-embedded Human pancreatic panniculitis using DFNA5/GSDME rabbit polyclonal antibody (STJ29568) at dilution of 1:50 (40x lens). Perform high pressure antigen retrieval with 10 mM citrate buffer pH 6.0 before commencing with immunohistochemistry staining protocol.