

Anti-ATG10 antibody (204-220) (STJ29527)

STJ29527

GENERAL INFORMATION

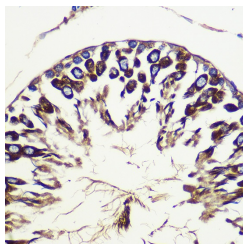
Product Type	Primary antibodies
Short Description	
Applications	WB/IHC-P/ELISA
Host/Source	Rabbit
Reactivity	Human/Mouse/Rat

PRODUCT PROPERTIES

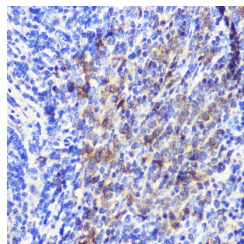
Clonality	Polyclonal
Clone ID	
Concentration	Lot specific
Conjugation	Unconjugated
Purification	Affinity purification
Dilution Range	WB:1:500-1:2000 IHC-P:1:50-1:200 ELISA:Recommended starting concentration is 1 Mu g/mL. Please optimize the concentration based on your specific assay requirements.
Formulation	PBS with 0.01% Thimerosal, 50% Glycerol, pH 7.3.
Isotype	IgG
Storage	Store at -20°C for up to 1 year from the date of receipt, and avoid repeat freeze-thaw cycles.
Instruction	

TARGET INFORMATION

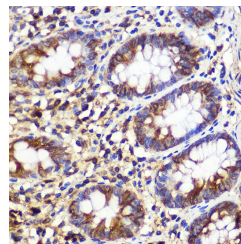
Gene ID	83734
Gene Symbol	ATG10
Uniprot ID	ATG10_HUMAN
Immunogen	
Immunogen Region	204-220
Specificity	A synthetic peptide corresponding to a sequence within amino acids 120-220 of human ATG10 (NP_113670.1).
Immunogen Sequence	GRPLTLKDIWEGVHECYKMR LLQGPWDITITQQEHPILGQP FFVLHPCKTNEFMTPLKNS QKINKNVNYITSWLSIVGPV VGLNLPLSYAKATSQDERNV P



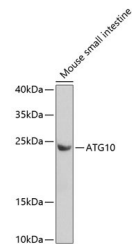
Immunohistochemistry analysis of paraffin-embedded Rat testis using ATG10 Rabbit polyclonal antibody (STJ29527) at dilution of 1:100 (40x lens). Perform microwave antigen retrieval with 10 mM PBS buffer pH 7. 2 before commencing with immunohistochemistry staining protocol.



Immunohistochemistry analysis of paraffin-embedded Mouse spleen using ATG10 Rabbit polyclonal antibody (STJ29527) at dilution of 1:100 (40x lens). Perform microwave antigen retrieval with 10 mM PBS buffer pH 7. 2 before commencing with immunohistochemistry staining protocol.



Immunohistochemistry analysis of paraffin-embedded Human colon using ATG10 Rabbit polyclonal antibody (STJ29527) at dilution of 1:100 (40x lens). Perform microwave antigen retrieval with 10 mM PBS buffer pH 7. 2 before commencing with immunohistochemistry staining protocol.



Western blot analysis of extracts of mouse small intestine, using ATG10 antibody (STJ29527) at 1:1000 dilution. Secondary antibody: HRP Goat Anti-Rabbit IgG (H+L) (STJ000856) at 1:10000 dilution. Lysates/proteins: 25 Mu g per lane. Blocking buffer: 3% nonfat dry milk in TBS-T. Detection: ECL Basic Kit. Exposure time: 90s.

This product is suitable for in-vitro studies under the RESEARCH USE ONLY [RUO] licence. This product must not be used as for diagnostic or other medical purposes.
St John's Laboratory Ltd, Knowledge Dock Business Centre, University Way, London, E16 2RD | Tel: 0208 223 3081