

Anti-FASTKD1 antibody (638-847) (STJ29521)
STJ29521

GENERAL INFORMATION

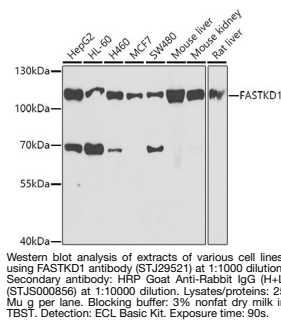
Product Type	Primary antibodies
Short Description	
Applications	WB/ELISA
Host/Source	Rabbit
Reactivity	Human/Mouse/Rat

PRODUCT PROPERTIES

Clonality	Polyclonal
Clone ID	
Concentration	Lot specific
Conjugation	Unconjugated
Purification	Affinity purification
Dilution	WB:1:500-1:2000
Range	ELISA:Recommended starting concentration is 1 Mu g/mL. Please optimize the concentration based on your specific assay requirements.
Formulation	PBS with 0.02% Sodium Azide, 50% Glycerol, pH 7.3.
Isotype	IgG
Storage	Store at-20°C for up to 1 year from the date of receipt, and avoid repeat freeze-thaw cycles.
Instruction	

TARGET INFORMATION

Gene ID	79675
Gene Symbol	FASTKD1
Uniprot ID	FAKD1_HUMAN
Immunogen	
Immunogen Region	638-847
Specificity	Recombinant fusion protein containing a sequence corresponding to amino acids 638-847 of human FASTKD1 (NP_078898.3).
Immunogen Sequence	KFLARLDSQLEILSPSR SAR VQFHLME LNRSVCLECP EFQ IPWFH D R F C Q Q Y N K G I G G M D G T Q Q Q I F K M L A E V L G G I N C V KASVLT P Y Y H K V D F E C I L D K R K K P L P Y G S H N I A L G Q L P E M P W E S N I E V G S R L P P G A E R I A L E F L D S K A L C R N I P H M K G K S A M K K R H L E I L G Y R V I Q I S Q F E W N S M A L S T K D A R M D Y L R E C I F G E V K S C L



This product is suitable for in-vitro studies under the RESEARCH USE ONLY [RUO] licence. This product must not be used as for diagnostic or other medical purposes.
St John's Laboratory Ltd, Knowledge Dock Business Centre, University Way, London, E16 2RD | Tel: 0208 223 3081