

Anti-CER1 antibody (18-267) (STJ29493)

STJ29493

GENERAL INFORMATION

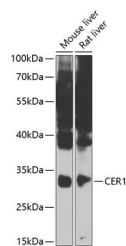
Product Type	Primary antibodies
Short Description	
Applications	WB/ELISA
Host/Source	Rabbit
Reactivity	Human/Mouse/Rat

PRODUCT PROPERTIES

Clonality	Polyclonal
Clone ID	
Concentration	Lot specific
Conjugation	Unconjugated
Purification	Affinity purification
Dilution	WB: 1:500-1:2000
Range	ELISA: Recommended starting concentration is 1 µg/mL. Please optimize the concentration based on your specific assay requirements.
Formulation	PBS with 0.02% Sodium Azide, 50% Glycerol, pH 7.3.
Isotype	IgG
Storage	Store at -20°C for up to 1 year from the date of receipt, and avoid repeat freeze-thaw cycles.
Instruction	

TARGET INFORMATION

Gene ID	9350
Gene Symbol	CER1
Uniprot ID	CER1_HUMAN
Immunogen	
Immunogen Region	18-267
Specificity	Recombinant fusion protein containing a sequence corresponding to amino acids 18-267 of human CER1 (NP_005445.1).
Immunogen Sequence	TRHODGRQNGSSLSPVLLPR NQRELPTGNHEEAEEKPDF VAVPHLVATSPAGEGQRQRE KMLSRFGRFWKKPEREMHPS RDSDEPFPPGTQSLIQPID GMKMEKSPLREEAKKFWHHF MFRKTPASQGVILPIKSHEV HWETCRTVPFSQTITHEGCE KVVVQNNLCFGKCGSVHFPG AAQHSHTSCSHCLPAKFTTM HLPNCTELSSVIKVVMLVE ECQCKVKTEHEDGHILHAG



Western blot analysis of extracts of various cell lines, using CER1 Antibody (STJ29493) at 1:1000 dilution. Secondary antibody: HRP Goat Anti-rabbit IgG (H+L) at 1:10000 dilution. Lysates/proteins: 25 µg per lane. Blocking buffer: 3% nonfat dry milk in TBST. Detection: ECL Basic Kit. Exposure time: 90s.

This product is suitable for in-vitro studies under the RESEARCH USE ONLY [RUO] licence. This product must not be used as for diagnostic or other medical purposes.
St John's Laboratory Ltd, Knowledge Dock Business Centre, University Way, London, E16 2RD | Tel: 0208 223 3081