

## Anti-TFEB antibody (50-173) (STJ29450)

STJ29450

### GENERAL INFORMATION

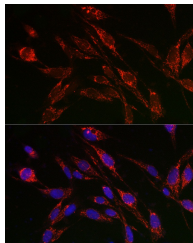
<b>Product Type</b>	Primary antibodies
<b>Short Description</b>	
<b>Applications</b>	WB/IHC-P/IF/ICC/ELISA
<b>Host/Source</b>	Rabbit
<b>Reactivity</b>	Human/Mouse/Rat

### PRODUCT PROPERTIES

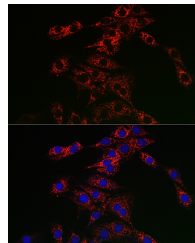
<b>Clonality</b>	Polyclonal
<b>Clone ID</b>	
<b>Concentration</b>	Lot specific
<b>Conjugation</b>	Unconjugated
<b>Purification</b>	Affinity purification
<b>Dilution Range</b>	WB:1:500-1:2000 IHC-P:1:50-1:200 IF/ICC:1:50-1:200 ELISA:Recommended starting concentration is 1 Mu g/mL. Please optimize the concentration based on your specific assay requirements.
<b>Formulation</b>	PBS with 0.02% Sodium Azide, 50% Glycerol, pH 7.3.
<b>Isotype</b>	IgG
<b>Storage</b>	Store at -20°C for up to 1 year from the date of receipt, and avoid repeat freeze-thaw cycles.
<b>Instruction</b>	

### TARGET INFORMATION

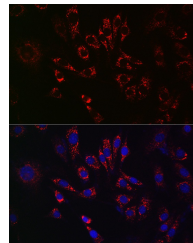
<b>Gene ID</b>	7942
<b>Gene Symbol</b>	TFEB
<b>Uniprot ID</b>	TFEB_HUMAN
<b>Immunogen</b>	
<b>Immunogen</b>	50-173
<b>Region</b>	
<b>Specificity</b>	Recombinant fusion protein containing a sequence corresponding to amino acids 50-173 of human TFEB (NP_009093.1).
<b>Immunogen</b>	TPAINTPVHFQSPPPVPGEV LKVQSYLENPTSYHLQQSQH QKVREYLSEYGNKFAAHIS PAQGSPPKPPAASPGVRAGH
<b>Sequence</b>	VLSSSAGNSAPNSPMAMLHI GSNPERELDDVDNIMRLDD VLVG



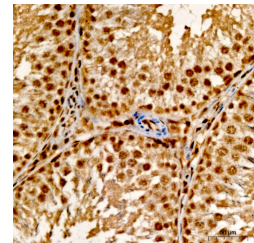
Immunofluorescence analysis of U2OS cells using TFEB Rabbit polyclonal antibody (STJ29450) at dilution of 1:50 (40x lens). Secondary antibody: Cy3 Goat Anti-Rabbit IgG (H+L) at 1:500 dilution. Blue: DAPI for nuclear staining.



Immunofluorescence analysis of PC-12 cells using TFEB Rabbit polyclonal antibody (STJ29450) at dilution of 1:50 (40x lens). Secondary antibody: Cy3 Goat Anti-Rabbit IgG (H+L) at 1:500 dilution. Blue: DAPI for nuclear staining.



Immunofluorescence analysis of NIH/3T3 cells using TFEB Rabbit polyclonal antibody (STJ29450) at dilution of 1:50 (40x lens). Secondary antibody: Cy3 Goat Anti-Rabbit IgG (H+L) at 1:500 dilution. Blue: DAPI for nuclear staining.



Immunohistochemistry analysis of TFEB in paraffin-embedded rat testis tissue using TFEB Rabbit polyclonal antibody (STJ29450) at a dilution of 1:100 (40x lens). High pressure antigen retrieval was performed with 0.01 M citrate buffer (pH 6.0) prior to immunohistochemistry staining.

This product is suitable for in-vitro studies under the RESEARCH USE ONLY [RUO] licence. This product must not be used as for diagnostic or other medical purposes.  
St John's Laboratory Ltd, Knowledge Dock Business Centre, University Way, London, E16 2RD | Tel: 0208 223 3081