

## Anti-L3MBTL3 antibody (1-255) (STJ29428)

STJ29428

### GENERAL INFORMATION

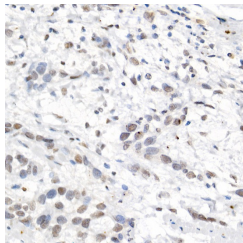
<b>Product Type</b>	Primary antibodies
<b>Short Description</b>	
<b>Applications</b>	WB/IHC-P/IF/ICC/ELISA
<b>Host/Source</b>	Rabbit
<b>Reactivity</b>	Human/Mouse

### PRODUCT PROPERTIES

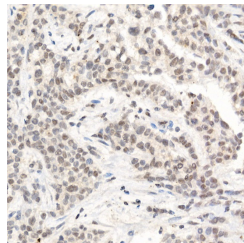
<b>Clonality</b>	Polyclonal
<b>Clone ID</b>	
<b>Concentration</b>	Lot specific
<b>Conjugation</b>	Unconjugated
<b>Purification</b>	Affinity purification
<b>Dilution</b>	WB:1:2000-1:4000
<b>Range</b>	IHC-P:1:50-1:200 IF/ICC:1:50-1:200 ELISA:Recommended starting concentration is 1 µg/mL. Please optimize the concentration based on your specific assay requirements.
<b>Formulation</b>	PBS with 0.05% Proclin300, 50% Glycerol, pH 7.3.
<b>Isotype</b>	IgG
<b>Storage</b>	Store at -20°C for up to 1 year from the date of receipt, and avoid repeat freeze-thaw cycles.
<b>Instruction</b>	

### TARGET INFORMATION

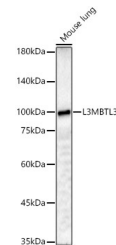
<b>Gene ID</b>	84456
<b>Gene Symbol</b>	L3MBTL3
<b>Uniprot ID</b>	LMBL3_HUMAN
<b>Immunogen</b>	
<b>Immunogen Region</b>	1-255
<b>Specificity</b>	Recombinant fusion protein containing a sequence corresponding to amino acids 1-255 of human L3MBTL3 (NP_115814.1).
<b>Immunogen Sequence</b>	MTESASSTSGQEFDFVSVMD WKDGVGTLPGSDLKFRVNEF GALEVITDENEMENVKKATA TTTWMVPTAQEAPTSPPSSR PVFFPAYWTSPPGCPTVFSE KTGMPFRLKDPVKVEGLQFC ENCCQYGNVDECLSGGNYCS QNCARHIKDKDQKEERDVEE DNEEEDPKCSRKKPKLSLK ADTKEDGEERDDEMENKQDV RILRGSQRARRKRRGDSAVL KQGLPPKGGKAWCWASYLE



Immunohistochemistry analysis of L3MBTL3 in paraffin-embedded human esophageal cancer using L3MBTL3 Rabbit polyclonal antibody (STJ29428) at dilution of 1:50 (40x lens). Perform high pressure antigen retrieval with 10 mM citrate buffer pH 6.0 before commencing with immunohistochemistry staining protocol.



Immunohistochemistry analysis of L3MBTL3 in paraffin-embedded human breast cancer using L3MBTL3 Rabbit polyclonal antibody (STJ29428) at dilution of 1:50 (40x lens). Perform high pressure antigen retrieval with 10 mM citrate buffer pH 6.0 before commencing with immunohistochemistry staining protocol.



Western blot analysis of lysates from Mouse lung, using L3MBTL3 Rabbit polyclonal antibody (STJ29428) at 1:4000 dilution. Secondary antibody: HRP Goat Anti-Rabbit IgG (H+L) (STJ5000856) at 1:10000 dilution. Lysates/proteins: 25 µg per lane. Blocking buffer: 3% nonfat dry milk in TBST. Detection: ECL Basic Kit. Exposure time: 180s.