

Anti-DCD antibody (20-110) (STJ29419)

STJ29419

GENERAL INFORMATION

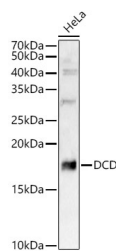
| | |
|--------------------------|--------------------|
| Product Type | Primary antibodies |
| Short Description | |
| Applications | WB/ELISA |
| Host/Source | Rabbit |
| Reactivity | Human/Mouse |

PRODUCT PROPERTIES

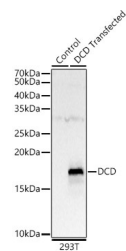
| | |
|----------------------------|---|
| Clonality | Polyclonal |
| Clone ID | |
| Concentration | Lot specific |
| Conjugation | Unconjugated |
| Purification | Affinity purification |
| Dilution Range | WB:1:2000-1:9000 ELISA:Recommended starting concentration is 1 Mu g/mL. Please optimize the concentration based on your specific assay requirements. |
| Formulation | PBS with 0.02% Sodium Azide, 50% Glycerol, pH 7.3. |
| Isotype | IgG |
| Storage Instruction | Store at -20°C for up to 1 year from the date of receipt, and avoid repeat freeze-thaw cycles. |

TARGET INFORMATION

| | |
|---------------------------|--|
| Gene ID | 117159 |
| Gene Symbol | DCD |
| Uniprot ID | DCD_HUMAN |
| Immunogen | |
| Immunogen Region | 20-110 |
| Specificity | Recombinant fusion protein containing a sequence corresponding to amino acids 20-110 of human DCD (NP_444513.1). |
| Immunogen Sequence | YDPEAASAPGSGNPCEASA AQKENAGEDPGLARQAPKPR KQRSSLLEKGLDGAKKAVGG LGKLGKDAVEDLESVGKGAV HDVKDVLDSVL |



Western blot analysis of HeLa, using DCD antibody (STJ29419) at 1:8000 dilution. Secondary antibody: HRP-Coat Anti-rabbit IgG (H+L) (STJSD00856) at 1:10000 dilution. Lysates/proteins: 25 Mu g per lane. Blocking buffer: 3% non-fat dry milk in TBST. Detection: ECL Basic Kit. Exposure time: 90s.



Western blot analysis of 293T, using DCD antibody (STJ29419) at 1:8000 dilution. Secondary antibody: HRP-Coat Anti-rabbit IgG (H+L) (STJSD00856) at 1:10000 dilution. Lysates/proteins: 25 Mu g per lane. Blocking buffer: 3% non-fat dry milk in TBST. Detection: ECL Basic Kit. Exposure time: 90s.

This product is suitable for in-vitro studies under the RESEARCH USE ONLY [RUO] licence. This product must not be used as for diagnostic or other medical purposes.
St John's Laboratory Ltd, Knowledge Dock Business Centre, University Way, London, E16 2RD | Tel: 0208 223 3081